



General catalogue **2017**



M Y H O M E



Rocal provides the warmth and the touch of class your home needs,

with our wood heating systems adapted to any space, environment or requirement.

We believe in a sustainable future and trust in renewable energy sources to bring comfort to your home.

Rocal

Rocal has had the same vocation since it was founded in 1982: to create a range of products—freestanding stoves, insert modules, hearths, barbecues...— that lend your home all the comfort of a wood fire.



Our factory is in Centelles, just outside Barcelona.

Our more than 30 years' experience in the home heating industry are the best guarantee of our products' quality.

Backed by the best human and technical team, Rocal is growing daily and expanding its horizons on a national and international scale.



Quality and design

Rocal offers a wide range of products for you to choose the one that best suits your home. Our stoves are the result of hi-tech manufacturing methods combined with handcrafted finishes. A process in which every attention is paid to detail and only the highest quality materials are used.

We aim to provide functional design that is pleasing to the eye. We want our products to fit in with your projects.



Innovation and efficiency

We are committed to continuous product improvement, innovation and efficiency, and that has put our range right out in front. We use the latest technology to achieve optimal performance with minimal emissions, which also means considerable fuel savings.



Guarantee and safety

Feel safe in the knowledge that our fireplaces are long-lasting and that our products are tested in compliance with European quality standards.

One of our priority objectives is to ensure safety in your home through quality products and professional distributors and fitters.



Wood

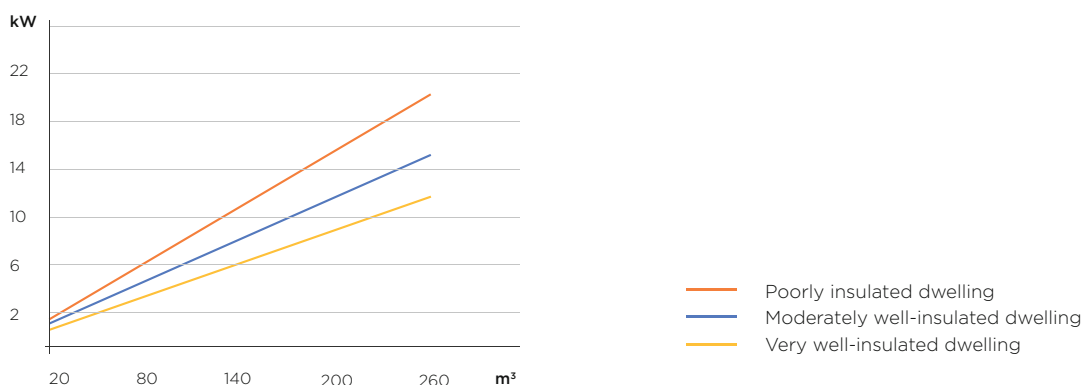
An ecological, economical biomass fuel. A natural fuel that man has used since time began. It is the renewable energy source par excellence. Using wood instead of fossil fuels reduces the greenhouse effect, as it does not increase the carbon dioxide in the atmosphere.

Furthermore, wood is easy to find, relatively cheap to obtain and contributes to clearing the forest floor.

Don't forget that wood burns slowly and elegantly and provides that special touch that makes a house a home.



How do you calculate the output power your dwelling needs?





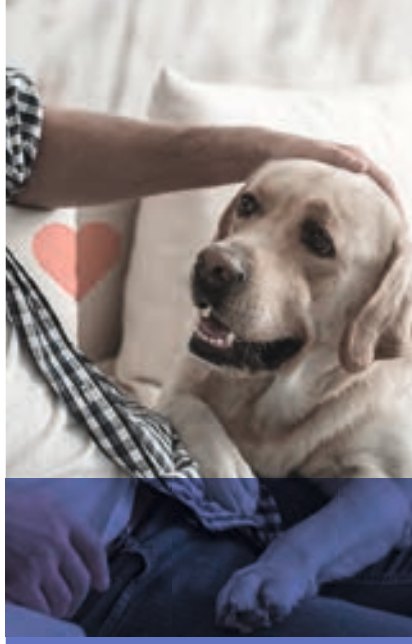
6 | 25

/ 1

Fireboxes

G series

8	G300/350/400
12	G450/500
14	G505
16	G 45DC
18	G 30 LD/LI
21	G 45 LD/LI
22	General features
23	Optional items
24	Fitting accessories



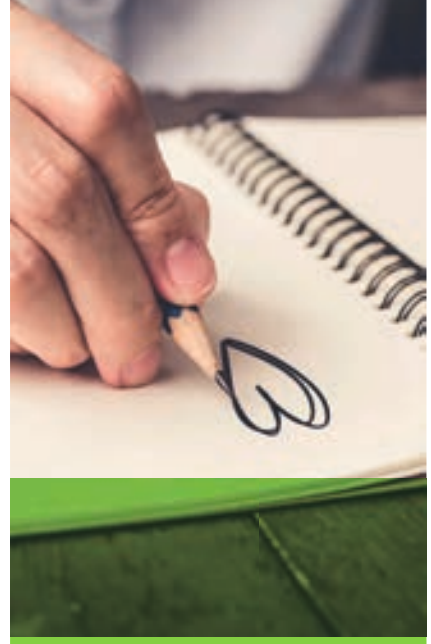
26 | 59

/ 2

Inserts

28	^{NEW} ARc graffiti 70 / 70 A / 80 / 100
32	^{NEW} ARc 50V graffiti
34	^{NEW} ARc 80 DC, 100 DC graffiti
38	^{NEW} ARc 76 LD/LI graffiti
39	^{NEW} ARc 96 LD/LI graffiti
40	^{NEW} ARc graffiti 73 TC / 93 TC
44	General features
45	Optional items
46	Fitting accessories

48	RCr graffiti 70 / 70 A / 80 / 100
52	RCr classic 65 / 70 / 70 CONICO / 80
56	General features
57	Optional items
58	Fitting accessories



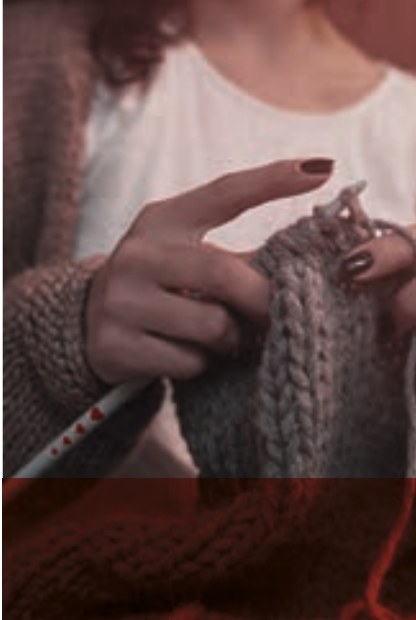
60 | 67

/ 3

Thermo-fireplaces

Termogar

62	LN 70
64	LN 70 Simplified
65	General features
66	Fitting accessories
67	How it works
67	Fitting accessories



68 | 101 / 4



102 | 119 / 5



120 | 130 / 6

Design freestanding stoves

70	Born
72	Vertex
74	City
76	Drop
78	NEW D-10 graffiti
82	D-7
83	D-8
84	NEW D-9
86	Aitana
88	NEW Barbara-90
91	Barbara-120
92	Estela
94	NEW Giselle
96	Gala
98	Prune

100	General features
101	Custom adaptations
101	Direction of slope
101	Measuring the slope
101	Measuring the height

Freestanding stoves

104	NEW Habit frontal 50V / 70A / 80 / 100
110	NEW Habit 73 / 93 TC
112	NEW Habit 76 LD/LI
114	NEW Habit 80 / 100 DC
116	Hebar

Barbecues

122	Plek 66 inox
124	Fornells inox jardín
125	Fornells inox porche
126	Palma 75 inox jardín
126	Palma 75 inox porche
128	Standard accessories
128	Custom adaptations

EControl

129	Smart combustion
-----	------------------

Other products

130	Ash vacuum cleaner
-----	--------------------

Symbols

130	Symbols
-----	---------



/1

Fireboxes

G series

Our G series Built in inserts epitomise all of Rocal's values in a single product: efficiency, quality, design, comfort and safety.

The exclusive fireboxes in this series are a distinguishing feature in your home. They offer a complete view of the fire and can be finished with the cladding of your choice.







Ash pan removal from below.

G300/350/400

FEATURES

- Vertical sliding and drop-down door.
- Steel combustion chamber.
- Vermiculite inner lining with refractory base.
- Wraparound casing with optional hot air conduction.
- Optional external air intake.
- Preheated primary and secondary air.
- Tertiary or safety air.
- Ash pan removal from above or below.
- Double deflector: three-position superior deflector for adjustable flow.

OPTIONAL ITEMS

- A 2080** ventilation unit
- 4-cm frame.
- Alba and Nero** decoratives frames, 10 cm.
- EControl automatic combustion control.

FITTING ACCESSORIES

- Inlet/outlet diffuser vents.
- Diffuser vent with hinged inlet
- Wood store.

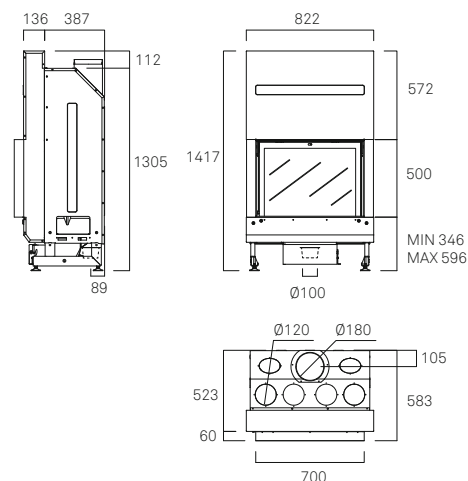
Pages 22 - 25



UNE
EN-13229

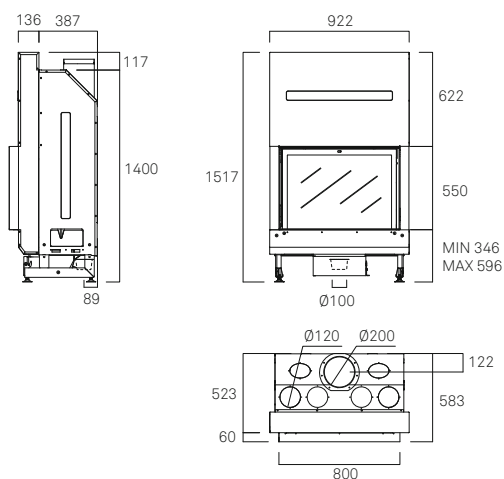
G 300

	G 300 M1710	G 350 M1720	G 400 M1730
η	81%	78%	78%
nom	11 kW	12 kW	15 kW
flame	7,5 - 13kW	8,5 - 14,5 kW	10,5 - 18 kW
CO	0,10%	0,10%	0,05%
mg/Nm^3	17 mg/Nm ³	30 mg/Nm ³	30 mg/Nm ³
kg/h	3,2 kg/h	3,5 kg/h	4,6 kg/h
kg	232 kg	267 kg	313 kg
cm	45 cm	50 cm	55 cm

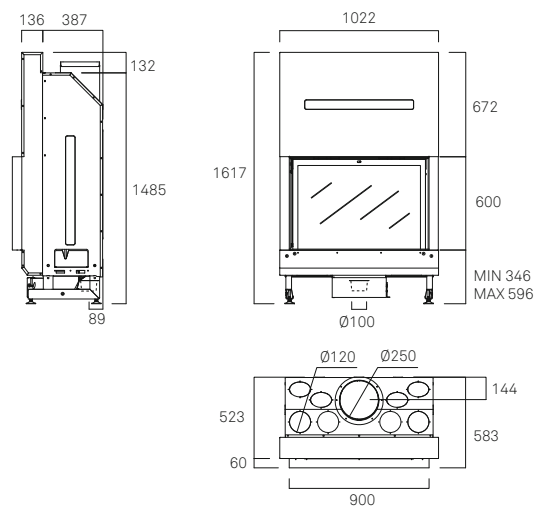




G 350



G 400





G 450

G 450/500

FEATURES

- Vertical sliding and drop-down door.
- Steel combustion chamber.
- Vermiculite inner lining with refractory base.
- Wraparound casing with optional hot air conduction.
- Optional external air intake.
- Preheated primary and secondary air.
- Tertiary or safety air.
- Ash pan removal from above or below.
- Double deflector: three-position superior deflector for adjustable flow.

OPTIONAL ITEMS









- A 2080 ventilation unit
- 4-cm frame.
- Alba and Nero 10-cm decorative frame.
- ECOntrol automatic combustion control.

FITTING ACCESSORIES

- Inlet/outlet diffuser vents.
- Diffuser vent with hinged inlet
- Wood store.

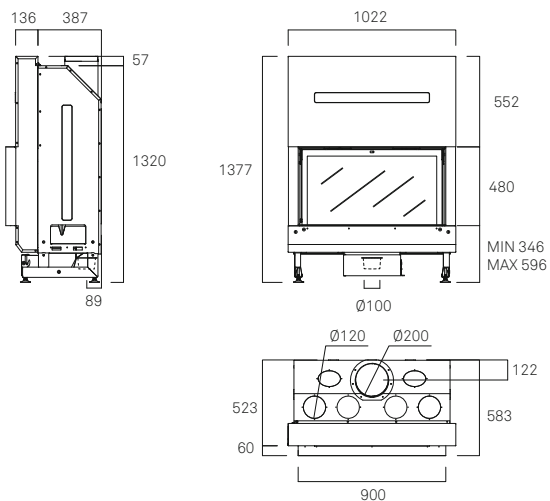
Pages 22 - 25

 UNE
EN-13229

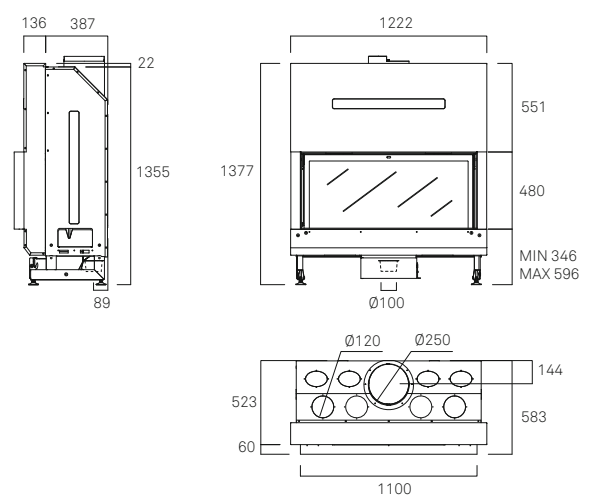
	G 450 M1740	G 500 M1750
	81%	78%
	15 kW	15 kW
	10,5 - 18kW	10,5 - 18 kW
	0,10%	0,10%
	30 mg/Nm ³	30 mg/Nm ³
	3,8 kg/h	4,8 kg/h
	254 kg	306 kg
	55 cm	65 cm

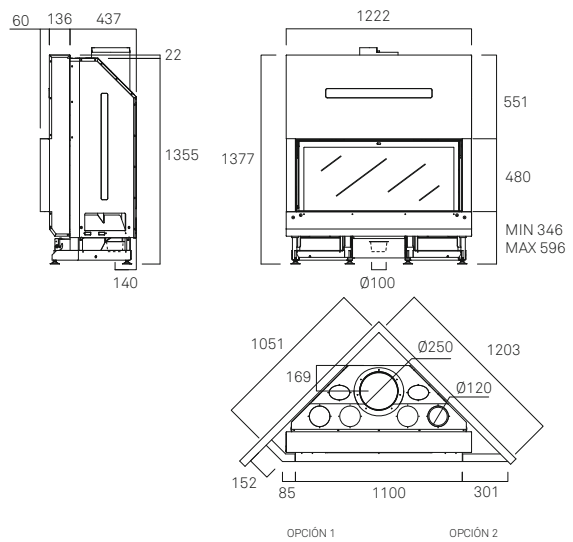


G 450



G 500







G 505

FEATURES

Corner.
 Vertical sliding and drop-down door.
 Steel combustion chamber.
 Vermiculite inner lining with refractory base.
 Wraparound casing with optional hot air conduction.
 Optional external air intake.
 Preheated primary and secondary air.
 Tertiary or safety air.
 Ash pan removal from above or below.
 Double deflector: three-position superior deflector for adjustable flow.

OPTIONAL ITEMS

A 2080 ventilation unit
 4-cm frame.
Alba and **Nero** 10-cm decorative frame.
 EControl automatic combustion control.



FITTING ACCESSORIES

Inlet/outlet diffuser vents.
 Diffuser vent with hinged inlet
 Wood store.

Pages 22 - 25

 UNE
 EN-13229

G 505
M1755

	80%
	15 kW
	10,5 - 18kW
	0,10%
	30 mg/Nm ³
	4,2 kg/h
	254 kg
	50 cm



G 45 DC

FEATURES

Twin vertical sliding and drop-down doors.
 Steel combustion chamber.
 Reversible refractory lining (colour: black).
 Wraparound casing with optional hot air conduction.
 Single-lever primary and secondary combustion air.
 Ash pan removal from above.

OPTIONAL ITEMS

A 2055 ventilation unit.
 Rimless frame.

FITTING ACCESSORIES

Inlet/outlet diffuser vents.
 Wood store.

Pages 22 - 25

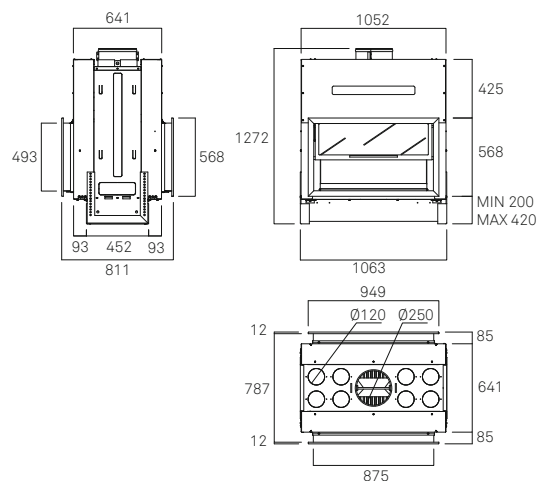


UNE
EN-13229

G 45 DC

M1641

	70%
	12 kW
	8,5 - 14,5 kW
	0,34%
	- mg/Nm ³
	3,6 kg/h
	376 kg
	55 cm



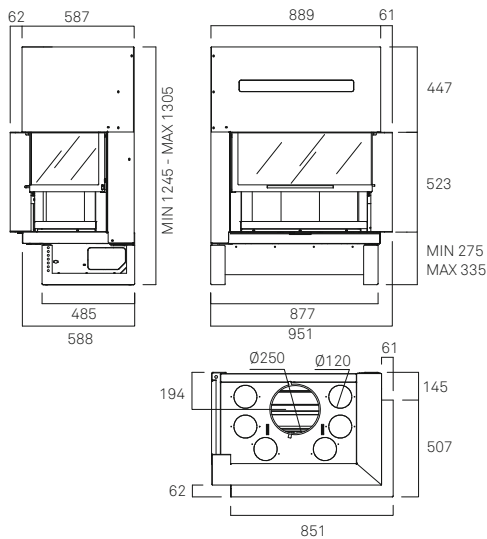




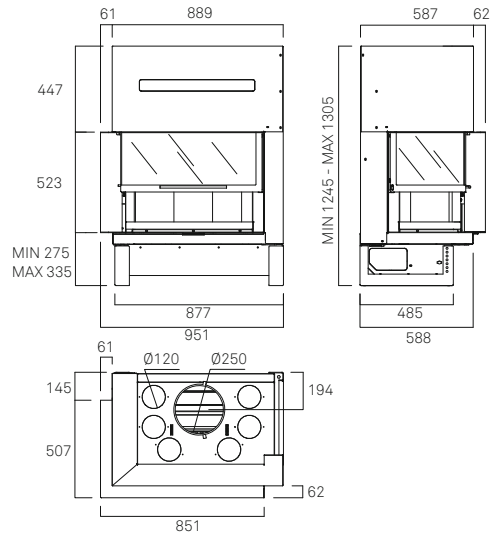
G30LD
with optional frame 4-cm



G 30 LD



G 30 LI



G 30LD/LI G 45LD/LI

FEATURES

- Sliding door with side opening (to enable easier cleaning of the glass).
- Steel combustion chamber.
- Reversible refractory lining (colour: black).
- Wraparound casing with optional hot air conduction.
- Single-lever primary and secondary combustion air.
- Ash pan removal from above.

OPTIONAL ITEMS

- A 2075 ventilation unit.
- 4-cm frame.

FITTING ACCESSORIES

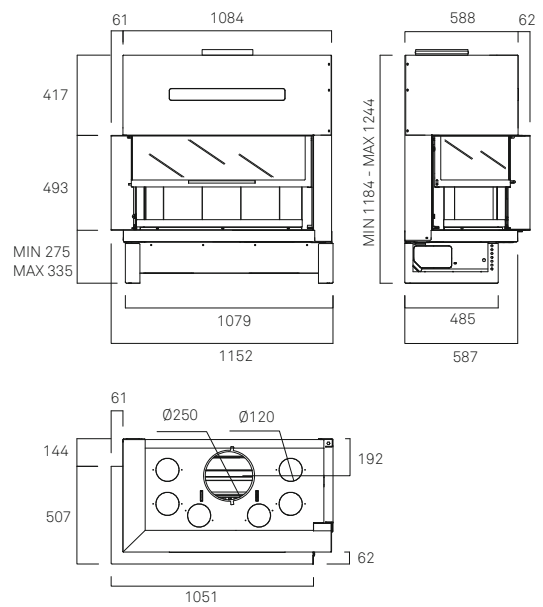
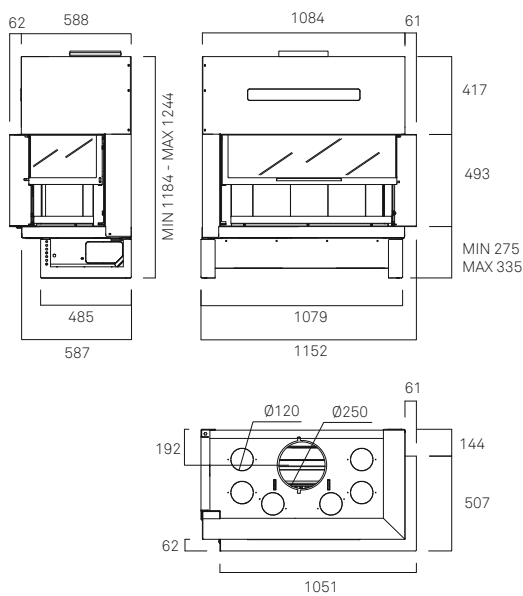
- Inlet/outlet diffuser vents.
- Wood store.



G 45 LD



G 45 LI



UNE
EN-13229

	G30 LD	G30 LI	G45 LD	G45 LI
	M1612	M1613	M1642	M1643

η	72%		71%	
nom	11 kW		13,5 kW	
	7,5 - 13 kW		9,5 - 16 kW	
	0,22%		0,39%	
	- mg/Nm ³		- mg/Nm ³	
kg/h	3,4 kg/h		4 kg/h	
kg	248 kg		295 kg	
cm	45 cm		55 cm	



Ash pan removal from above.

General features



Reversible refractory lining in black.

G30LD/ G30LI/ G45DC/ G45LD/ G45LI



Vermiculite lining.

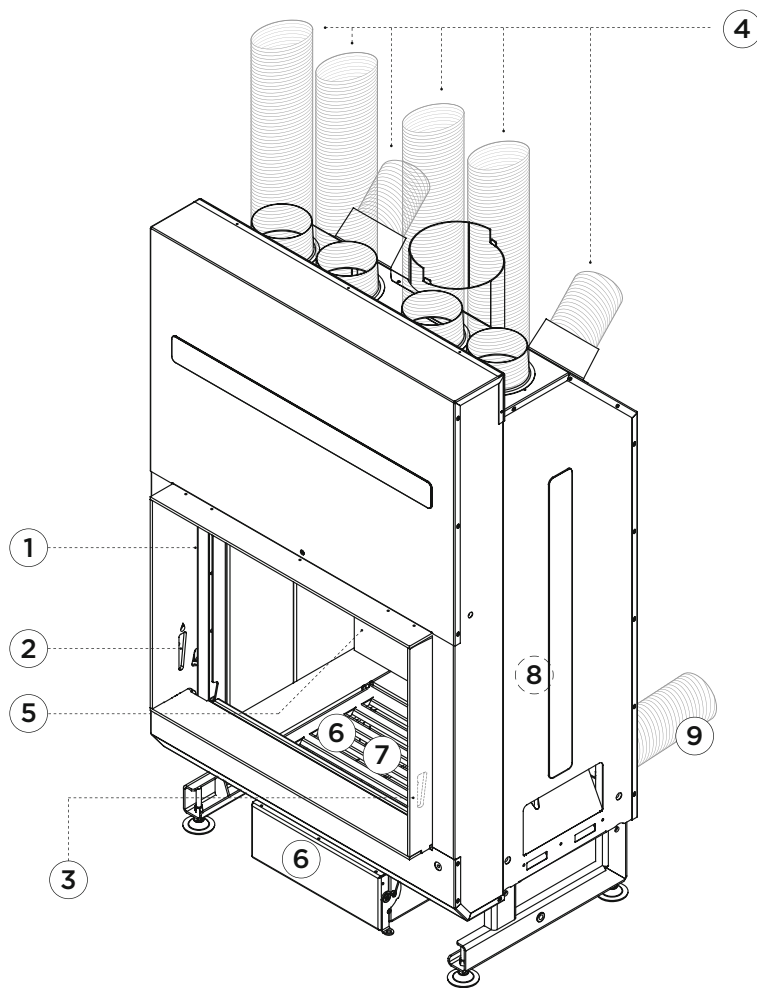
G300/ G350/ G400/ G450/ G500/ G505



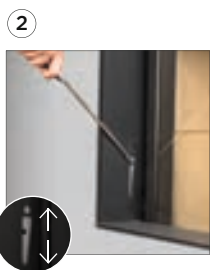
Adjustable, levelling stand.



Sliding and drop down door (for glass cleaning).

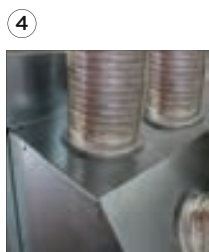


* Explanatory diagram Model G300

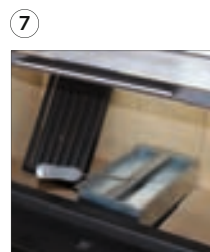


Primary control.
Mechanism that provides oxygen for combustion through the fire grille.

G300/ G350/ G400/ G450/G500/ G505

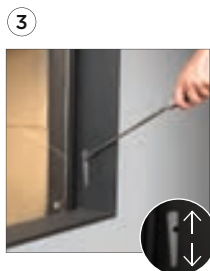


Wraparound casing with optional hot air conduction.
Conducts the hot air to the room itself or other rooms in the house.



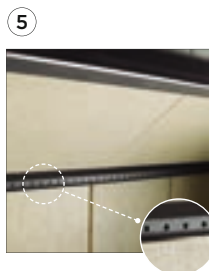
Ash pan removal from above.

G30LD/ G30LI/ G45DC/ G45LD/ G45LI



Secondary control.
Mechanism that provides oxygen for combustion, by means of double combustion and the upper part of the glass.

G300/ G350/ G400/ G450/G500/ G505



Tertiary or safety air.
Makes an extra contribution of oxygen that enables the combustion gases to burn better.

G300/ G350/ G400/ G450/G500/ G505



Steel combustion chamber.
The high robustness of the combustion chamber ensures the long life of these devices.



Single-lever primary and secondary control.
Provides oxygen for the lower and upper part of the glass.

G30LD/ G30LI/ G45DC/ G45LD/ G45LI



Ash pan removal from above or below.

G300/ G350/ G400/ G450/G500/ G505



External air inlet.
Guarantees that the air in the house is healthier. Does not interfere with domestic air extraction devices, such as those in the kitchen and bathroom.

G300/ G350/ G400/ G450/ G500/ G505

Optional items

VENTILATION KITS:

Ventilation kits increase the performance of the device and, when hot air is channelled, they distribute the air better to other parts of the house.



A 2080 Ventilation unit 830m³/h.
For models: G 300, G 350,
G 400, G 450, G 500, G 505.



A 2055 Ventilation unit 340m³/h.
For models: G 45 DC.



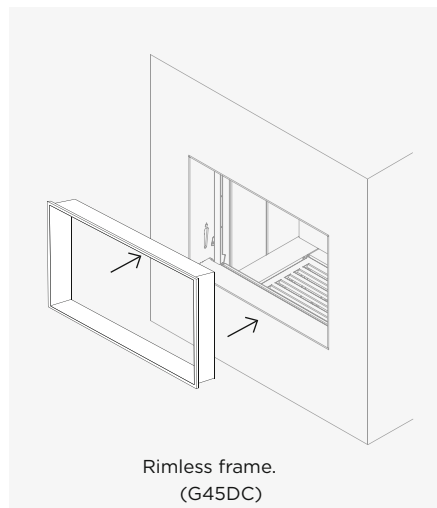
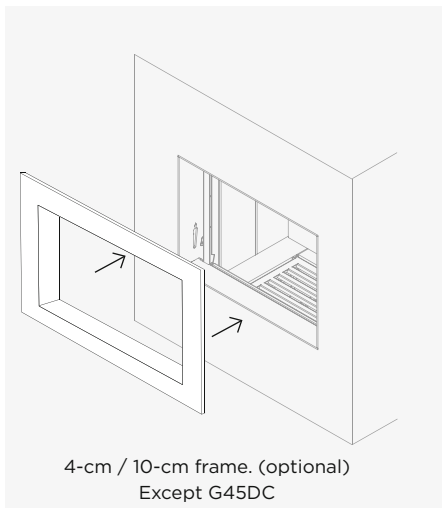
A 2075 Ventilation unit 415m³/h.
For models: G 30 LD/LI,
G 45 LD /LI.



EControl for models: G300, G350,
G400, G450, G500, G505.
More information on page 129

FRAME:

Option to finish the final appearance of the insert by adding a frame.



DECORATIVE FRAME 10cm:

Unique works of art, hand-painted by artist Berta Noguer.

The force of the brush strokes can be seen. Paintings can be adapted to any size.

For models: G 300, G 350, G 400, G 450, G 500, G 505.



Alba



Nero

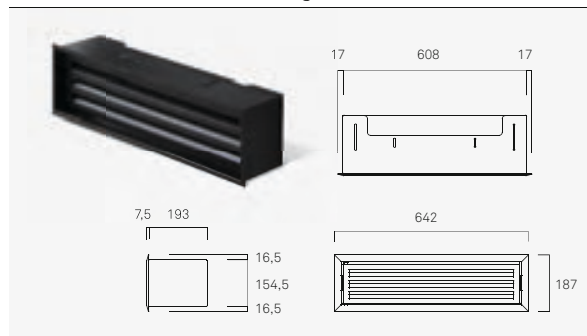
Fitting accessories

Our range of fitting accessories makes home installation easier and helps you achieve the right look.

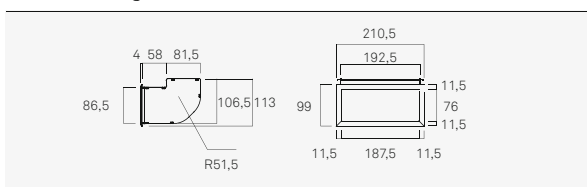
DIFFUSER VENTS

With the aim of providing solutions when inserts and fireplaces are fitted in completed buildings, we have created a range of diffuser vents that ensure proper convection-air inlet and outlet, i.e. the proper venting of the hearth, and help to integrate these components, which can be difficult to add.

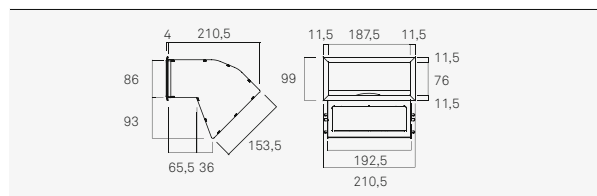
C4000 Diffuser vent with hinged inlet



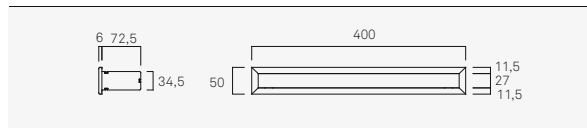
DO000 Single air inlet diffuser vent



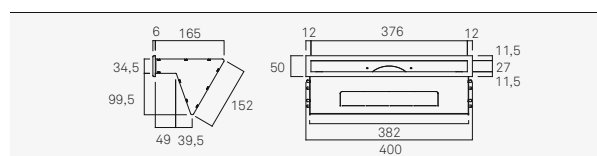
D1000 Single air outlet diffuser vent



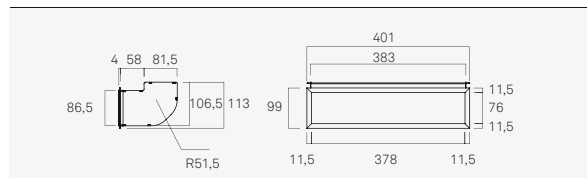
DO002 Single air inlet diffuser vent



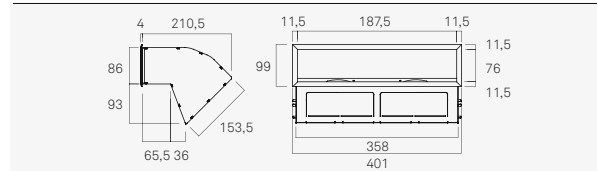
D1002 Single air outlet diffuser vent



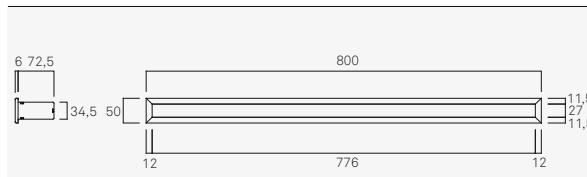
DO005 Double air inlet diffuser vent



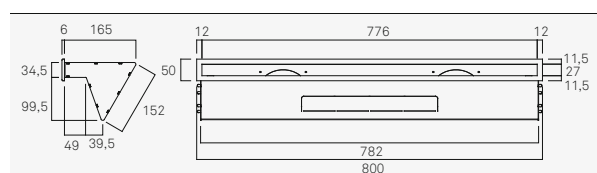
D1005 Double air outlet diffuser vent



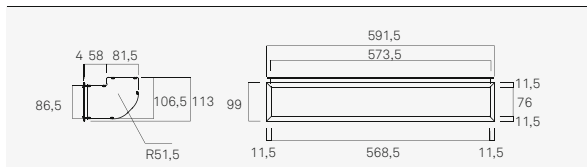
DO007 Double air inlet diffuser vent



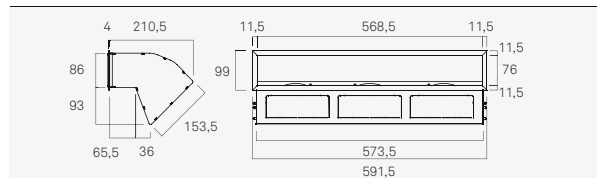
D1007 Single air outlet diffuser vent



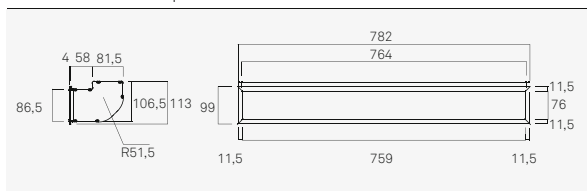
DO010 Triple air inlet diffuser vent



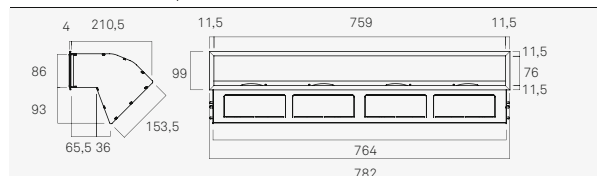
D1010 Triple air outlet diffuser vent



DO015 Quadruple air inlet diffuser vent



D1015 Quadruple air outlet diffuser vent



LOG STORE

An ideal space for storing logs.

Cut-outs for three shelves and light in upper section.



Diffuser vents, model G-30 LD



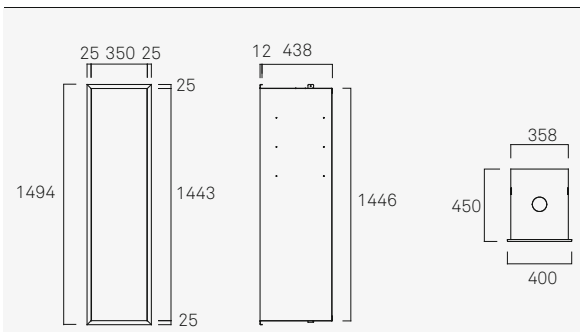
..... Outlet diffuser vent

..... Inlet diffuser vent



..... Wood store

C1000 Wood store





/ 2

Inserts

Inserts act as heat recoverers. They are designed to be inserted in existing or new built open fireplaces, achieving excellent efficiency and output.

Thanks to their forced fans system, air circulates in a way that optimises heat distribution, thus reaching an ideal temperature and covering a larger area.



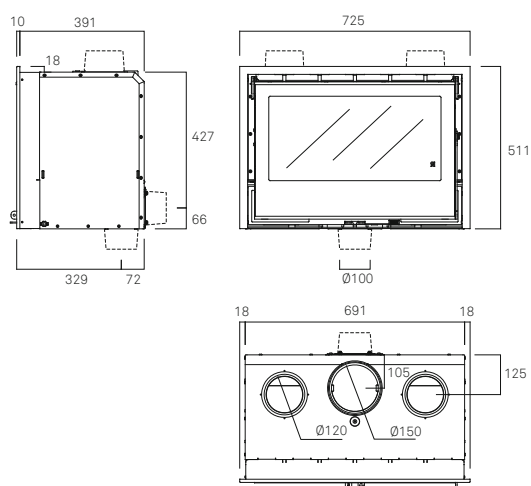
ARc 70A graffiti

Equipped with
EControl

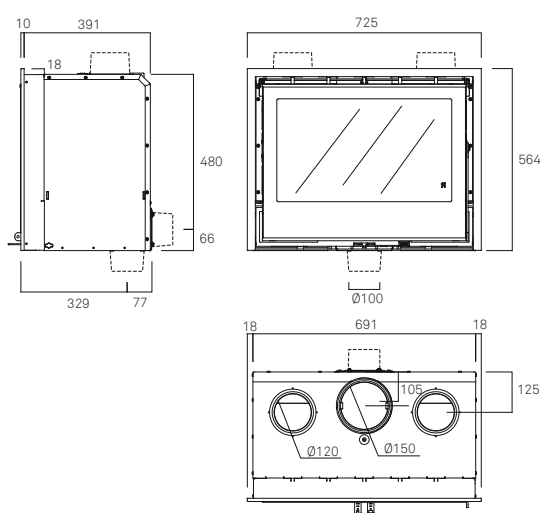




ARC 70 graffiti



ARC 70 A graffiti



ARC graffiti



FEATURES

- Reversible front door.
- Steel combustion chamber.
- Vermiculite inner lining.
- Wraparound casing with optional hot air conduction.
- Segregated hot air direction control: right and left for outlet from front or above.
- Optional external air inlet.
- Preheated primary and secondary air.
- Tertiary or safety air.
- Ash pan removal from front.
- Double deflector, top deflector with two-position adjustable flow.
- Two or four fans unit with two automatic speed settings and one manual.

Can be supplied without fans unit on request.

OPTIONAL ITEMS

- Adapter for standard four-sided frame.
- Decorative frame 10 cm **Alba** and **Nero**.
- Fans speed controller.
- EControl automatic combustion control.

FITTING ACCESSORIES

- Inlet/outlet diffusers.
- Wood store.

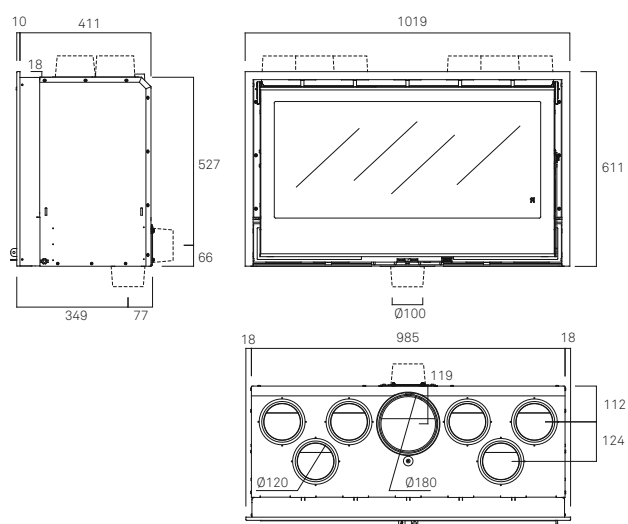
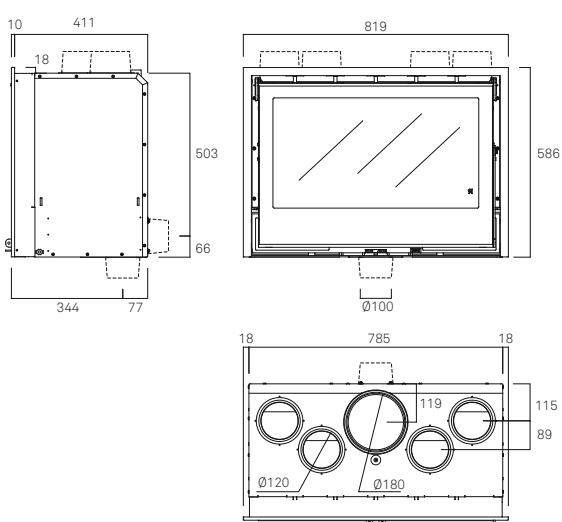
Pages 44 - 47



Arc 80 graffiti



Arc 100 graffiti



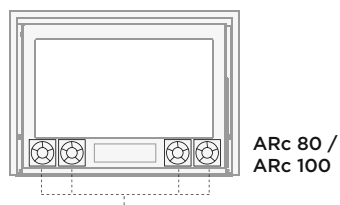
UNE EN-13229
UNE EN-60335

Arc 70 graffiti	Arc 70 A graffiti	Arc 80 graffiti	Arc 100 graffiti
M5911	M5916	M5931	M5941

	76%	76%	78%	80%
	8 kW	8 kW	9,5 kW	11 kW
	5,5 - 9,5 kW	5,5 - 9,5 kW	6,5 - 11,5 kW	7,5 - 13 kW
	0,08%	0,08%	0,09%	0,09%
	36 mg/Nm ³	36 mg/Nm ³	34 mg/Nm ³	31 mg/Nm ³
	2,4 kg/h	2,4 kg/h	2,8 kg/h	3,2 kg/h
	97 kg	103 kg	120 kg	143 kg
	45 cm	45 cm	50 cm	60 cm



2 fans unit
with 2 automatic speed settings
and 1 manual.



4 fans unit
with 2 automatic speed settings
and 1 manual.



ARC 50V graffiti

FEATURES

Reversible front door.
 Steel combustion chamber.
 Vermiculite inner lining.
 Wraparound casing with optional hot air conduction.
 Segregated hot air direction control: right and left for outlet from front or above.
 Optional external air inlet.
 Preheated primary and secondary air.
 Tertiary or safety air.
 Ash pan removal from front.
 Double deflector, top deflector with two-position adjustable flow.
 Two fans unit with two automatic speed settings and one manual.

Can be supplied without fans unit on request.

OPTIONAL ITEMS

Adapter for standard four-sided frame.
 Decorative frame 10 cm **Alba** and **Nero**.
 Fans speed controller.
 EControl automatic combustion control.

FITTING ACCESSORIES

Inlet/outlet diffusers.
 Wood store.

Pages 44 - 47



UNE EN-13229
 UNE EN-60335

ARC 50V graffiti M5971



77%



6 kW



4 - 7 kW



0,06%



23 mg/Nm³



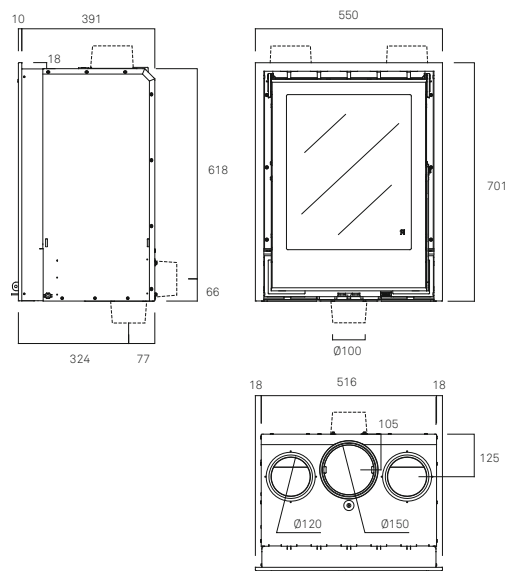
2 kg/h



98 kg



30 cm



ARC DC graffiti



FEATURES

Reversible doors.
Steel combustion chamber.
Vermiculite inner lining.
Wraparound casing with optional hot air conduction.
Optional external air inlet.
Preheated primary and secondary air.
Double deflector, the lower one with two positions for draught adjusting.
Steel-coated vermiculite base.

OPTIONAL ITEMS

Adapter for standard four-sided frame.
Decorative frame 10 cm **Alba** and **Nero**.
EControl automatic combustion control.

FITTING ACCESSORIES

Inlet/outlet diffusers.

Pages 44 - 47



UNE EN-13229

ARc 80 DC graffiti

M5981*

ARc 100 DC graffiti

M5986*

η	>75%	-%
nom	13,5 kW	- kW
flame	9,5 - 16 kW	- kW
CO	<0,13%	-%
mg/Nm^3	- mg/Nm ³	- mg/Nm ³
kg/h	3,6 kg/h	- kg/h
kg	173 kg	207 kg
cm	45 cm	- cm

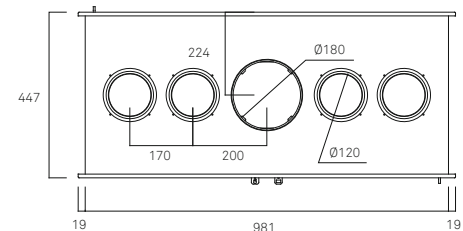
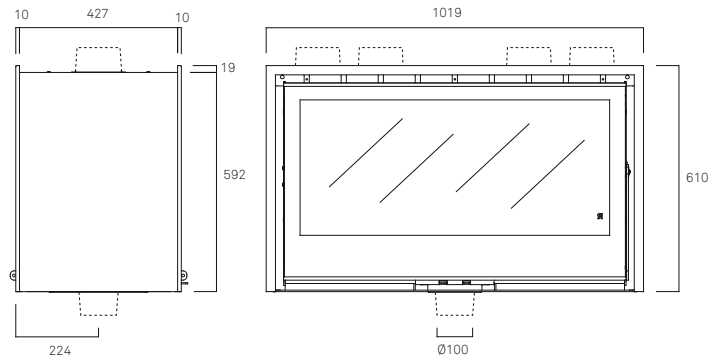
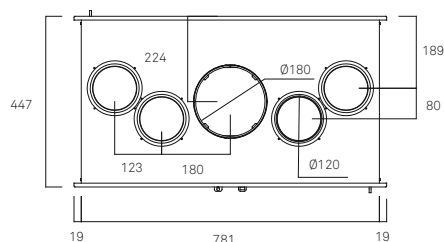
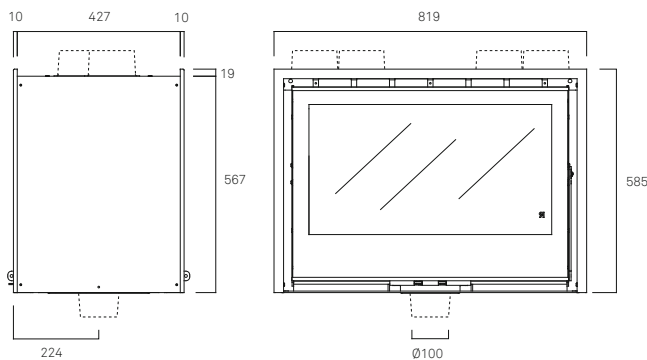
* Results in certification process.
Consult your dealer for more information



ARc 80 DC graffiti



ARc 100 DC graffiti





ARc 80 DC







ARC 76 LD / LI graffiti



FEATURES

- Steel combustion chamber.
- Vermiculite inner lining.
- Wraparound casing with optional hot air conduction.
- Segregated hot air direction control: right and left for outlet from front or above.
- Optional external air inlet.
- Preheated primary and secondary air.
- Tertiary or safety air.
- Ash pan removal from front.
- Double deflector, top deflector with two-position adjustable flow.
- Two fans unit with two automatic speed settings and one manual.

Can be supplied without fans unit on request.

OPTIONAL ITEMS

- Upper frame LD or lower LI at 4cm.
- Lower frame LD or upper LI at 4cm.
- Finished frame LD/LI wall at 4 cm (2 items).
- Fans speed controller.
- EControl automatic combustion control.

FITTING ACCESSORIES

- Inlet/outlet diffusers.
- Wood store.

Pages 44 - 47

UNE EN-13229
UNE EN-60335

ARc 76 LD graffiti **ARc 76 LI graffiti**
M5952* **M5953***

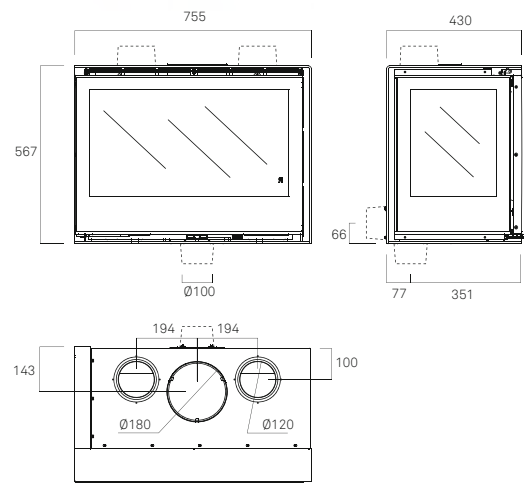
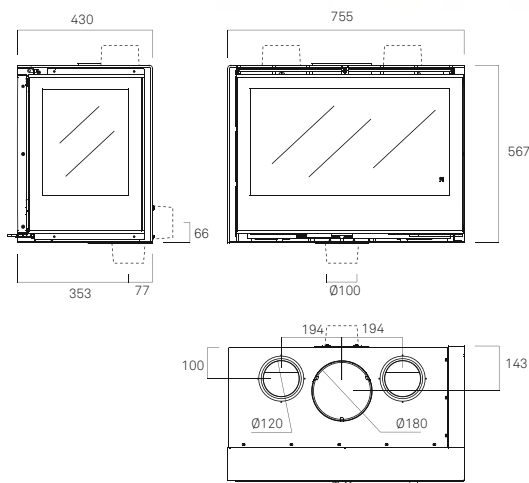
	>75%
	12 kW
	8,5 - 14,5 kW
	<0,13%
	- mg/Nm ³
	3,1 kg/h
	161 kg
	40 cm

* Results in certification process.
Consult your dealer for more information



ARC 76 LD graffiti

ARC 76 LI graffiti



ARC 96 LD / LI graffiti



FEATURES

- Steel combustion chamber.
- Vermiculite inner lining.
- Wraparound casing with optional hot air conduction.
- Segregated hot air direction control: right and left for outlet from front or above.
- Optional external air inlet.
- Preheated primary and secondary air.
- Tertiary or safety air.
- Ash pan removal from front.
- Double deflector, top deflector with two-position adjustable flow.
- Four fans unit with two automatic speed settings and one manual.

Can be supplied without fans unit on request.

OPTIONAL ITEMS

- Upper frame LD or lower LI at 4cm.
- Lower frame LD or upper LI at 4cm.
- Finished frame LD/LI wall at 4 cm (2 items).
- Fans speed controller.
- EControl automatic combustion control.

FITTING ACCESSORIES

- Inlet/outlet diffusers.
- Wood store.

Pages 44 - 47



UNE EN-13229
UNE EN-60335

ARc 96 LD graffiti **ARc 96 LI graffiti**
M5955* **M5956***

	>75%
	16 kW
	11 - 19 kW
	<0,13%
	- mg/Nm ³
	4,1 kg/h
	187 kg
	50 cm

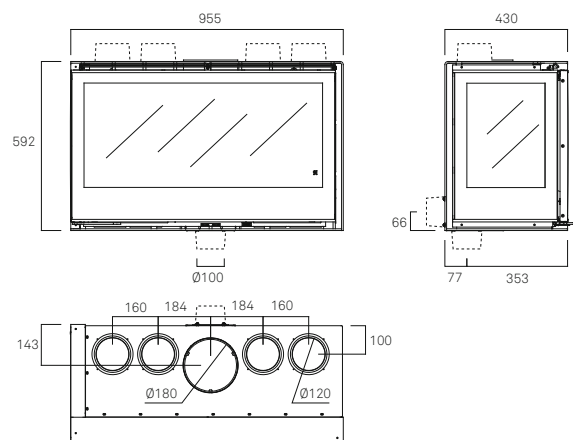
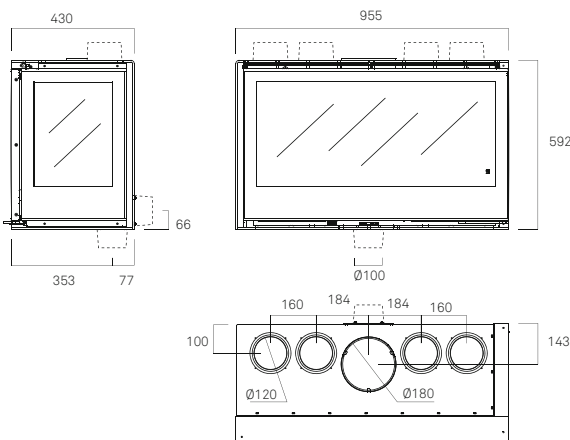
* Results in certification process.
Consult your dealer for more information



ARC 96 LD graffiti



ARC 96 LI graffiti







ARc 93 TC graffiti
Equipped with
EControl

ARC TC graffiti



FEATURES

Steel combustion chamber.
 Vermiculite inner lining.
 Wraparound casing with optional hot air conduction.
 Segregated hot air direction control: right and left for outlet from front or above.
 Optional external air inlet.
 Preheated primary and secondary air.
 Tertiary or safety air.
 Ash pan removal from front.
 Double deflector, top deflector with two-position adjustable flow.
 Two (73 TC) or four (93 TC) fans kit with two automatic speed settings and one manual.

Can be supplied without fans unit on request.

OPTIONAL ITEMS

Upper or lower frame at 4 cm.
 Frame for wall finishing at 4cm (units).
 Fans speed controller.
 EControl automatic combustion control.

FITTING ACCESSORIES

Inlet/outlet diffusers.
 Wood store.

Pages 44 - 47





**ARc 73
TC graffiti**
M5963*

**ARc 93
TC graffiti**
M5965*

	>75%	>75%
	9 kW	14,5 kW
	6-11,5 kW	10 - 17,5 kW
	<0,13%	<0,13%
	- mg/Nm ³	- mg/Nm ³
	2,6 kg/h	4 kg/h
	159 kg	185 kg
	40 cm	50 cm

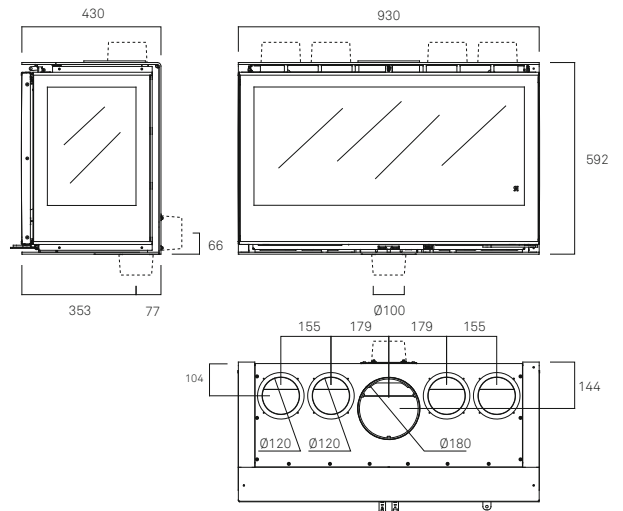
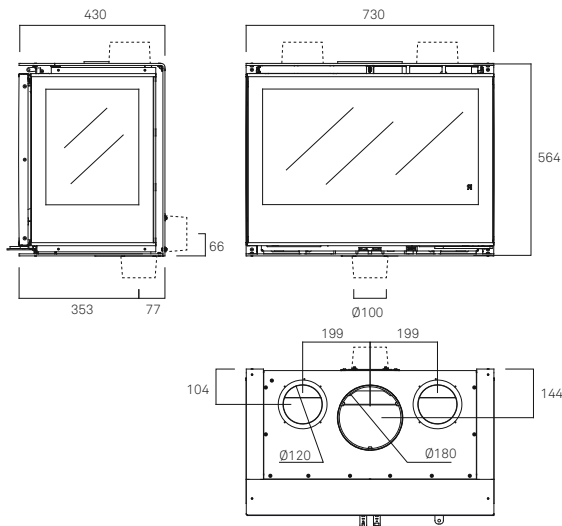
* Results in certification process.
Consult your dealer for more information



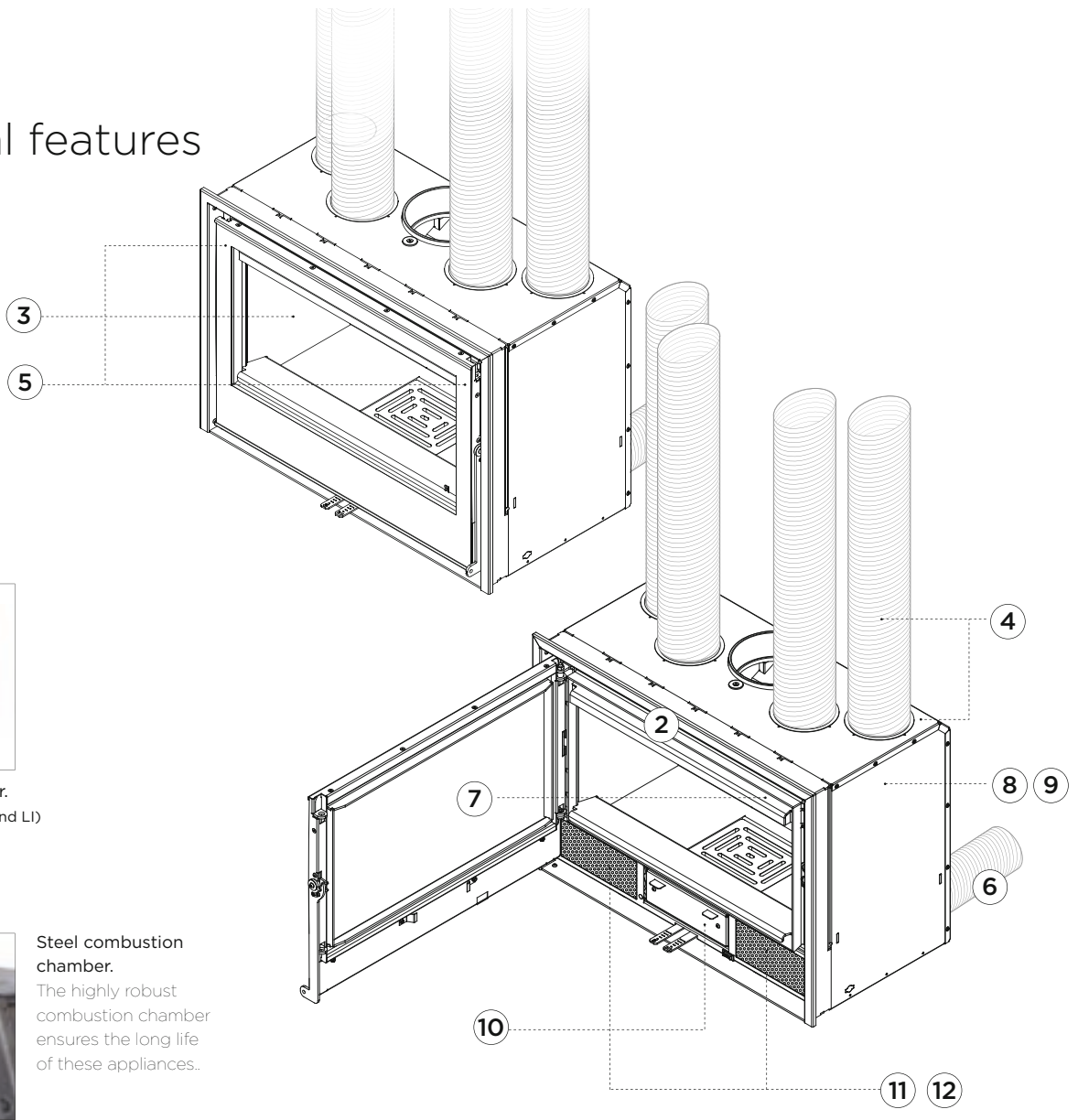
ARc 73 TC graffiti



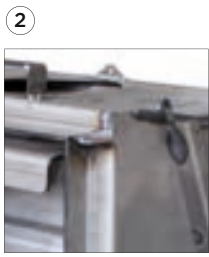
ARc 93 TC graffiti



General features



1 Reversible front door.
(Except model TC, LD and LI)



2 Steel combustion chamber.
The highly robust combustion chamber ensures the long life of these appliances.



3 Vermiculite inner lining.



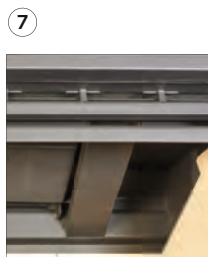
6 External air inlet.



10 Ash pan.
Except ARc 80DC and ARc 100DC.



4 Wrap-around casing and optional hot air conduction.



7 Preheated secondary air.



11 2 fans unit with 2 automatic speed settings and 1 manual.



5 Air direction control from front or above.



8 Tertiary or safety air.
9 Preheated primary air.



12 4 fans kit with 2 automatic speed settings and 1 manual.

Optional items



Adaptor for standard 4-sided frame.

FRAME ARc 76 / 96 LD-LI AT 4 cm:

- M5952-11 Upper frame ARc 76 LD or lower frame ARc 76 LI at 4 cm
 M5955-11 Upper frame ARc 96 LD or lower frame ARc 96 LI at 4 cm



M5952-13 Finished frame ARc 76 LD / LI wall at 4 cm (2 items)

M5955-13 Finished frame ARc 96 LD/LI wall at 4 cm (2 items)

- M5952-12 Lower frame ARc 76 LD or upper frame ARc 76 LI at 4 cm
 M5955-12 Lower frame ARc 96 LD or upper frame ARc 96 LI at 4 cm

FRAME ARc 73 / 93 TC AT 4 cm:

- M5963-11 Upper or lower frame ARc 73 TC at 4 Cm
 M5965-11 Upper or lower frame ARc 93 TC at 4 Cm



M5963-13 Finished frame ARc 73 TC wall at 4 cm (2 items)

M5965-13 Finished frame ARc 93 TC wall at 4 cm (2 items)

DECORATIVE FRAME 10cm:

Unique works of art, hand-painted by artist Berta Noguer. The force of the brush strokes can be seen. Paintings can be adapted to any size. (Except lateral models and three sided models)



Alba



Nero



EControl
 More information on page 129



Adjustable fan speed control:
 Speed adjustment with new positions.
 With four preprogrammed modes.
 Compatible with G series modules and ARc Inserts.

Fitting accessories

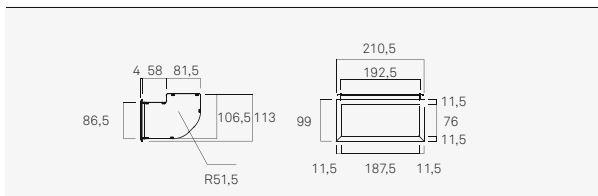
Our range of fitting accessories makes home installation easier and helps you achieve the right look.

DIFFUSER VENTS

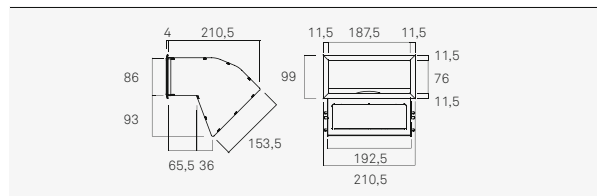
With the aim of providing solutions when metal inserts and fireplaces are fitted in completed buildings, we have created a range of diffuser vents that ensure proper convection-air inlet and outlet, i.e. the proper venting of the hearth, and help to integrate these components, which can be awkward to incorporate.



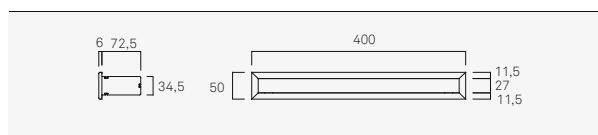
D0000 Single air inlet diffuser vent



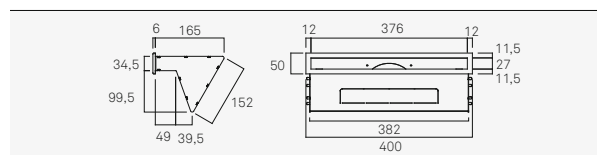
D1000 Single air outlet diffuser vent



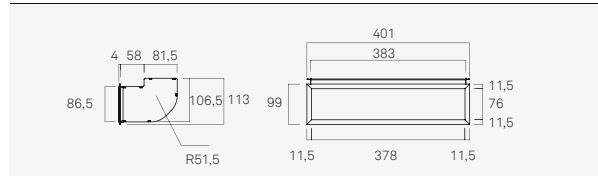
D0002 Single air inlet diffuser vent narrow



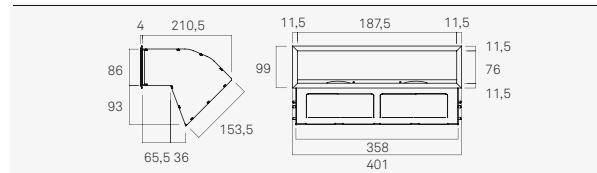
D1002 Single air outlet diffuser vent narrow



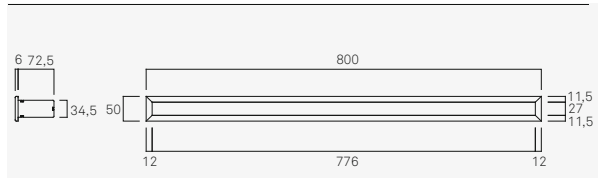
D0005 Double air inlet diffuser vent



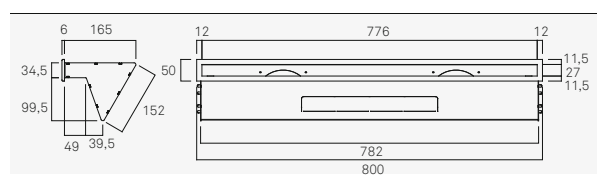
D1005 Double air outlet diffuser vent



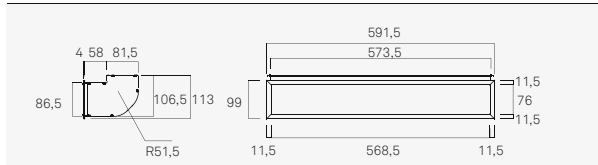
D0007 Double air inlet diffuser vent narrow



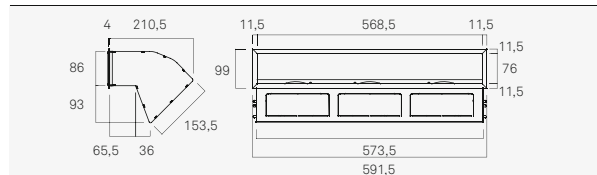
D1007 Single air outlet diffuser vent narrow



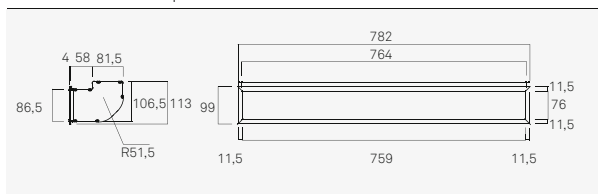
D0010 Triple air inlet diffuser vent



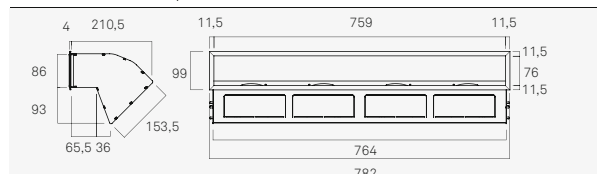
D1010 Triple air outlet diffuser vent



D0015 Quadruple air inlet diffuser vent



D1015 Quadruple air outlet diffuser vent



LOG STORE

An ideal space for storing logs.

Cut-outs for three shelves and light in upper section.



Diffuser vents, model G-30 LD



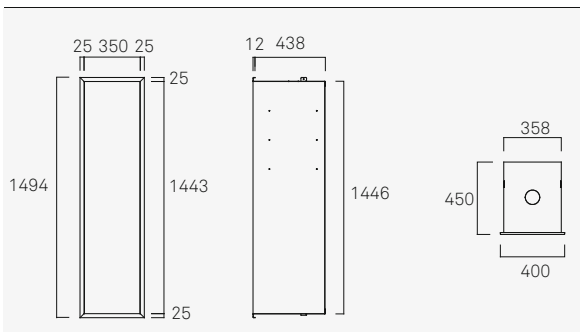
Outlet diffuser vent

Inlet diffuser vent



Wood store

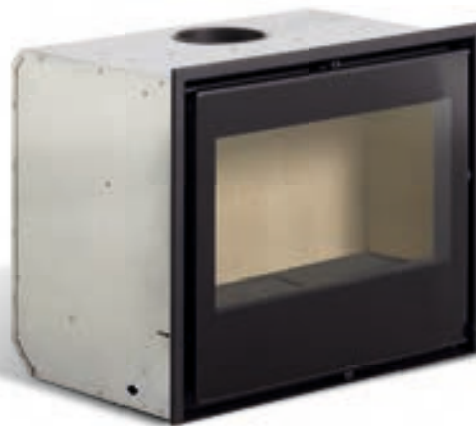
C1000 Wood store





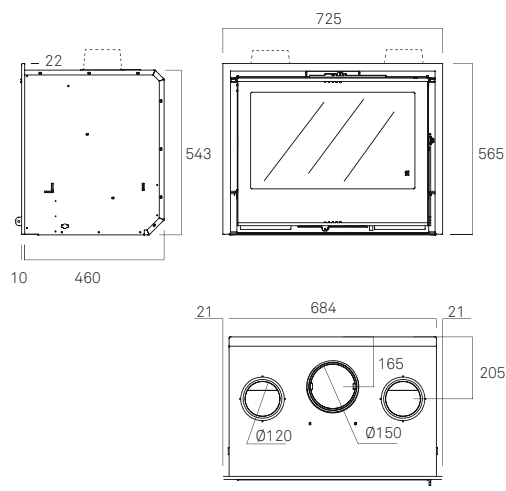
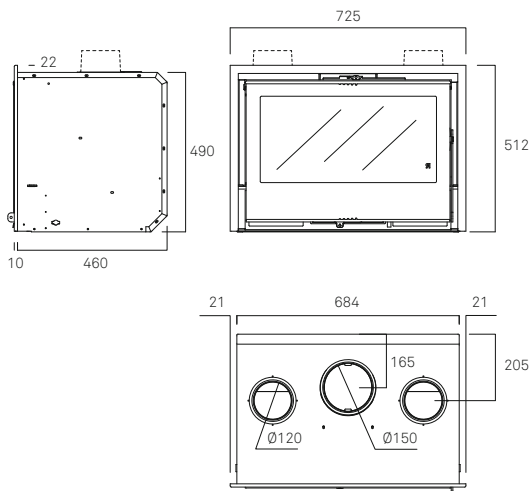


RCr 100 graffiti



RCr 70 graffiti

RCr 70 A graffiti



RCr graffiti

FEATURES

- Reversible front door.
- Steel combustion chamber.
- Vermiculite lining.
- Wrap-around casing and optional hot air conduction.
- Air direction control from front or above.
- Primary and secondary register.
- Ash pan removal from front.
- 2- or 4- fans unit with 2-speed automatic or manual thermostat switch.

OPTIONAL ITEMS

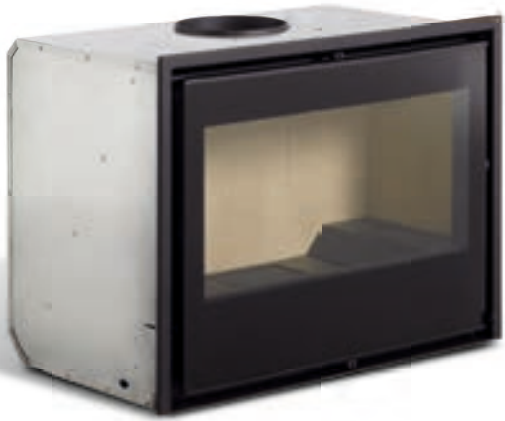
- Adaptor for standard 4-sided frame.
- Alba and Nero** decoratives frames, 10 cm.
- Adjustable, levelling stand.

FITTING ACCESSORIES

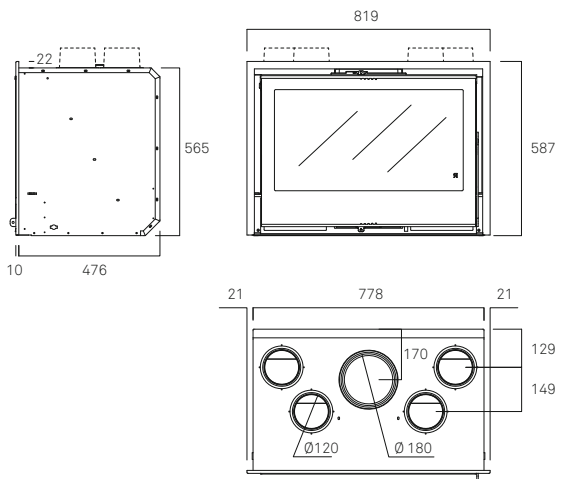
- Inlet/outlet diffuser vents.
- Wood store.

UNE EN-13229
UNE EN-60335

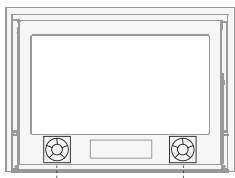
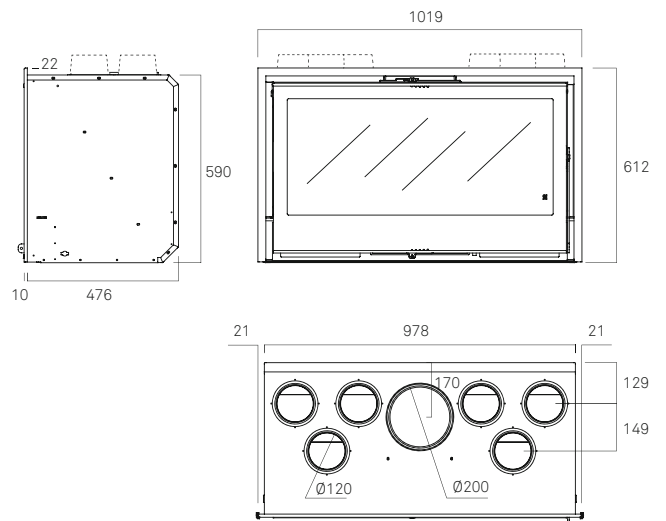
	RCr 70 graffiti M5706	RCr 70 A graffiti M5708	RCr 80 graffiti M5711	RCr 100 graffiti M5716
η	80%	80%	81%	80%
nom	7,5 kW	7,5 kW	9,1 kW	10,5 kW
	5 - 9 kW	5 - 9 kW	6 - 11 kW	7 - 12,5 kW
	0,12%	0,12%	0,13%	0,26%
	16 mg/Nm ³	16 mg/Nm ³	19 mg/Nm ³	20 mg/Nm ³
kg/h	2,2 kg/h	2,2 kg/h	2,4 kg/h	3,2 kg/h
kg	95 kg	99 kg	119 kg	148 kg
cm	45 cm	45 cm	50 cm	60 cm



RCr 80 graffiti

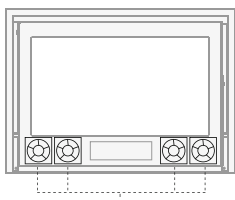


RCr 100 graffiti



**RCr 70 /
RCr 70 A**

2- fans unit with 2-speed automatic or manual thermostat switch.



**RCr 80 /
RCr 100**

4- fans unit with 2-speed automatic or manual thermostat switch.





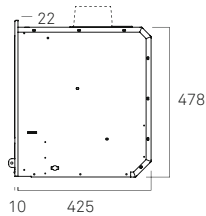
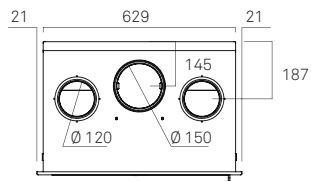
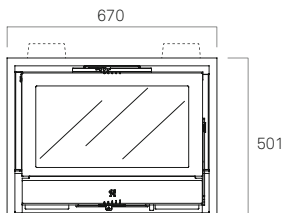


RCr 70 Classic

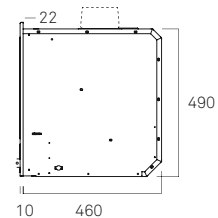
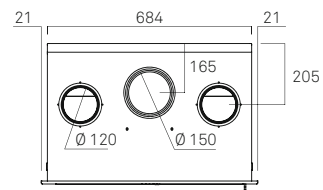
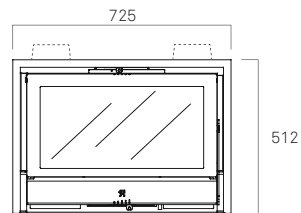




RCr 65 classic



RCr 70 classic



RCr classic

FEATURES

- Reversible front door.
- Steel combustion chamber.
- Vermiculite lining.
- Wrap-around casing and optional hot air conduction.
- Air direction control from front or above.
- Primary and secondary register.
- Ash pan removal from front.
- 2- or 4- fans unit with 2-speed automatic or manual thermostat switch.

OPTIONAL ITEMS

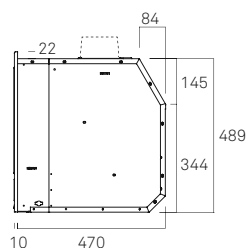
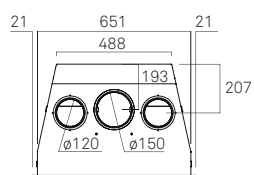
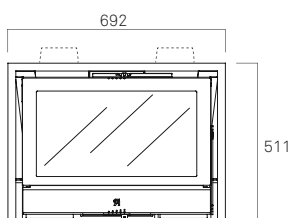
- Adaptor for standard 4-sided frame.
- Alba and Nero** decorative frames, 10 cm.
- Adjustable, levelling stand.

FITTING ACCESSORIES

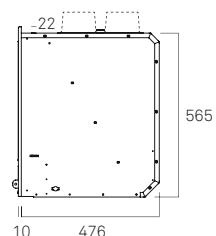
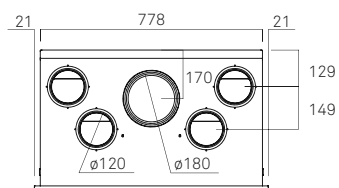
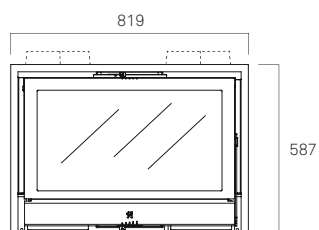
- Inlet/outlet diffuser vents.
- Wood store.



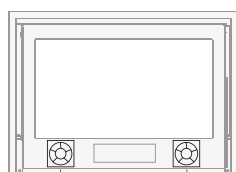
RCr 70 CONICO classic



RCr 80 classic

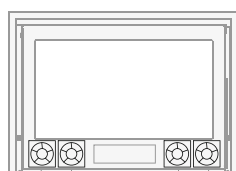


UNE EN-13229
UNE EN-60335



**RCr 65 /
RCr 70 /
RCr 70 conico**

2- fans unit with 2-speed automatic or manual thermostat switch.



**RCr 80 /
RCr 100**

4- fans unit with 2-speed automatic or manual thermostat switch.

	RCr 65 classic	RCr 70 classic	RCr 70 conico classic	RCr 80 classic
--	-----------------------	-----------------------	------------------------------	-----------------------

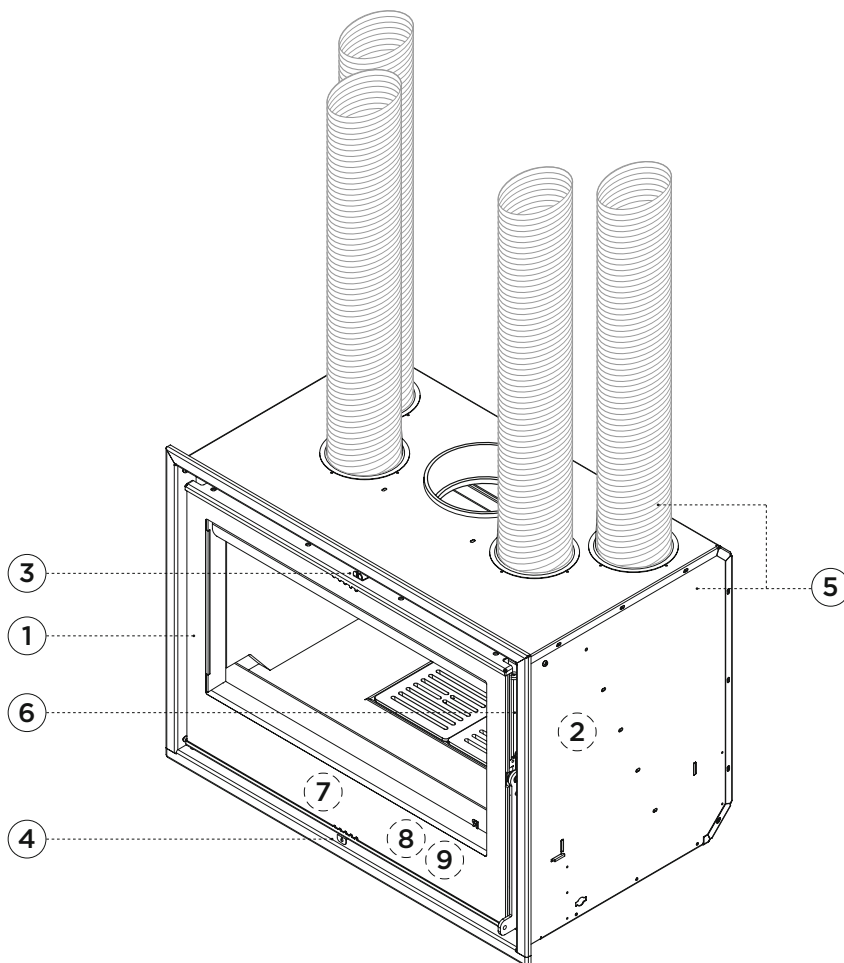
	M5700	M5705	M5720	M5710
--	--------------	--------------	--------------	--------------

	77%	80%	77%	81%
	6,5 kW	7,5 kW	6,5 kW	9,1 kW
	4,5 - 7,5 kW	5 - 9 kW	4,5 - 7,5 kW	6 - 11 kW
	0,26%	0,12%	0,26%	0,13%
	- mg/Nm ³	16 mg/Nm ³	- mg/Nm ³	19 mg/Nm ³
	1,9 kg/h	2,2 kg/h	1,4 kg/h	2,4 kg/h
	80 kg	95 kg	88 kg	119 kg
	40 cm	45 cm	40 cm	50 cm

General features



Vermiculite lining.



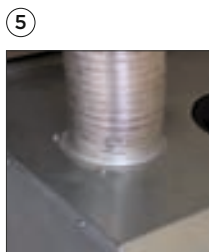
* Explanatory diagram Model RCr80 graffiti



Reversible front door.



Steel combustion chamber.
The high robustness of the combustion chamber ensures the long life of these devices.



Wrap-around casing and optional hot air conduction.



2- fans unit with 2-speed automatic or manual thermostat switch (270 m³/h).



Secondary register.
Mechanism that provides oxygen for combustion through the upper part of the glass.



Air direction control from front or above.



4- fans unit with 2-speed automatic or manual thermostat switch (540 m³/h). (RCr 80, RCr 100)



Primary register.
Mechanism that provides oxygen for combustion through the fire grille.



Ash pan removal from front.

Optional items



Adaptor for standard 4-sided frame. (RCr)



C6000 For RCr
Adjustable, levelling stand.

DECORATIVE FRAME 10cm:

Unique works of art, hand-painted by artist Berta Noguer.
The force of the brush strokes can be seen. Paintings can be adapted to any size.



Alba



Nero

Fitting accessories

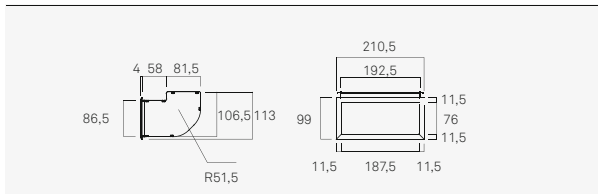
Our range of fitting accessories makes home installation easier and helps you achieve the right look.

DIFFUSER VENTS

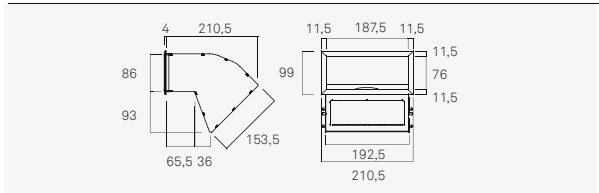
With the aim of providing solutions when metal inserts and fireplaces are fitted in completed buildings, we have created a range of diffuser vents that ensure proper convection-air inlet and outlet, i.e. the proper venting of the hearth, and help to integrate these components, which can be awkward to incorporate.



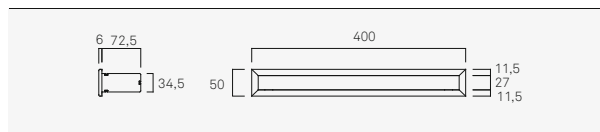
D0000 Single air inlet diffuser vent



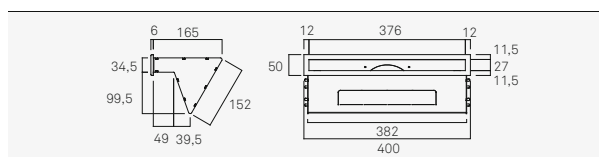
D1000 Single air outlet diffuser vent



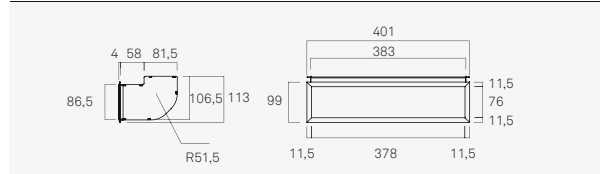
D0002 Single air inlet diffuser vent narrow



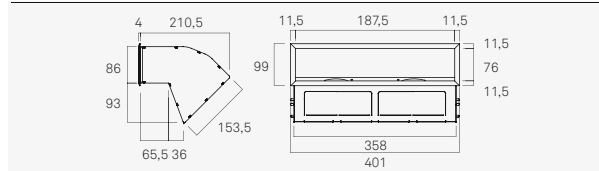
D1002 Single air outlet diffuser vent narrow



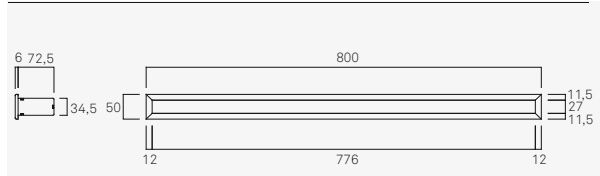
D0005 Double air inlet diffuser vent



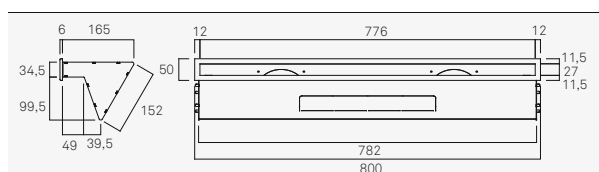
D1005 Double air outlet diffuser vent



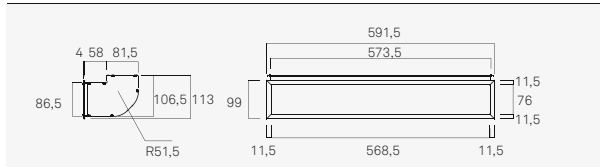
D0007 Double air inlet diffuser vent narrow



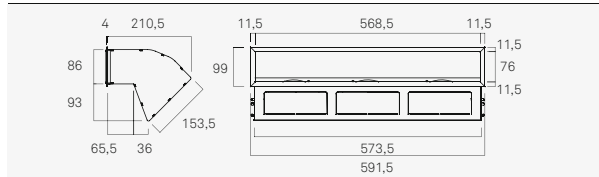
D1007 Single air outlet diffuser vent narrow



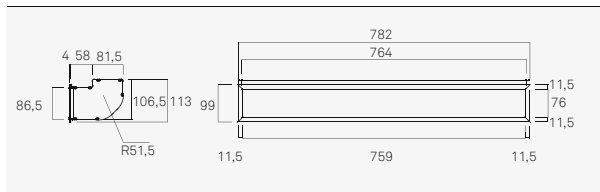
D0010 Triple air inlet diffuser vent



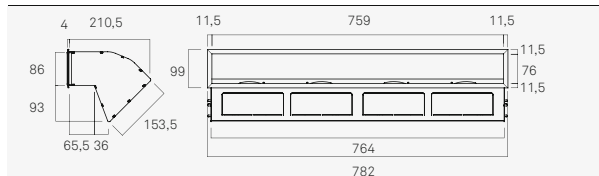
D1010 Triple air outlet diffuser vent



D0015 Quadruple air inlet diffuser vent



D1015 Quadruple air outlet diffuser vent



LOG STORE

An ideal space for storing logs.

Cut-outs for three shelves and light in upper section.



Diffuser vents, model G-30 LD



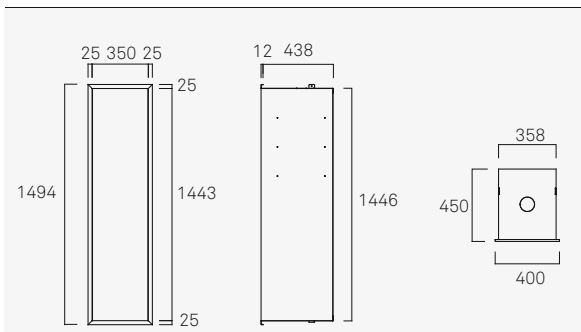
..... Outlet diffuser vent

..... Inlet diffuser vent



..... Wood store

C1000 Wood store





/ 3

Thermo-fireplaces

(Fireplace-boiler for heating)

The Termogar thermo-fireplace is a biomass boiler. It runs on the greenest, cheapest, most easily obtainable renewable energy source there is: wood.

Experts have confirmed that wood provides heat more cheaply other energy sources, both renewable and conventional (gas, gas oil and electricity) and, of course, is more ecological.

The Termogar can be used as a single heat source or as part of a mixed system, combining renewable energy with fossil fuels. Certification under European standards guarantees its quality and efficiency.





LN 70

Termogar

LN70

LN70 Simplified

UNE
EN-13229

TERMOGAR

LN70

LN70
SIMPLIFIED

W1501

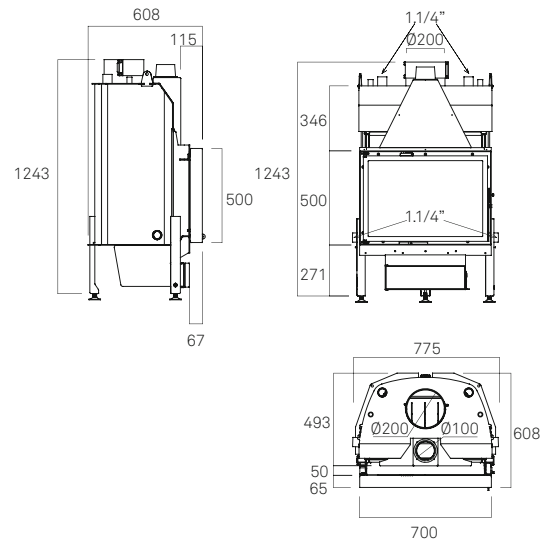
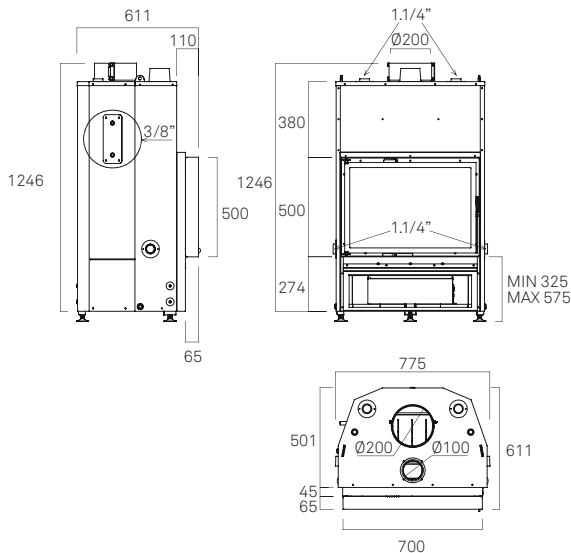
W1502

Total theoretical heat output	85%	85%
Useful heat output		
Heat output transferred to water	22,3 kW	22,3 kW
Water heating efficiency		
Global efficiency	15,5 - 26,5 kW	15,5 - 26,5 kW
Fuel consumption		
Water content	0,24%	0,24%
Net weight		
Operating pressure	- mg/Nm ³	- mg/Nm ³
Maximum pressure		
CO at 13% O ₂	5,5 kg/h	5,5 kg/h

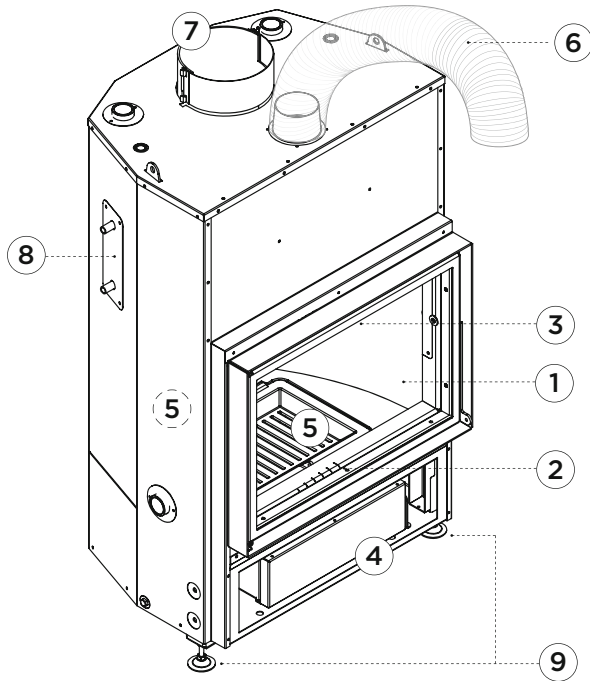


TERMOGAR LN70

TERMOGAR LN70 SIMPLIFIED

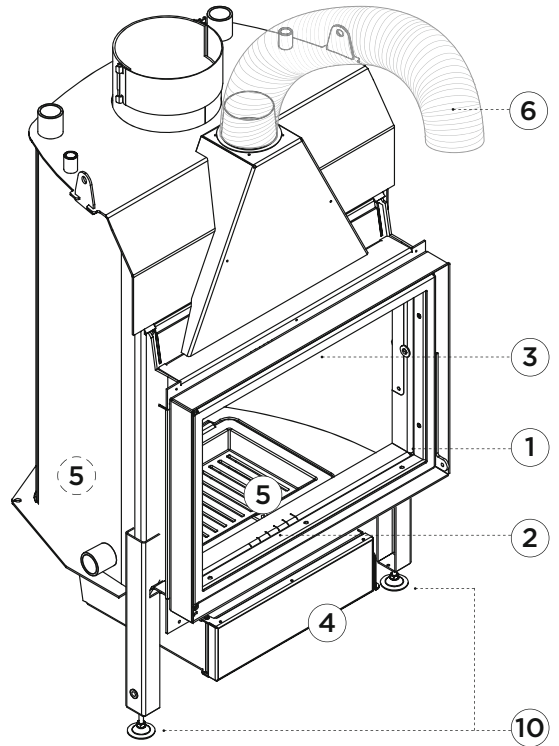


Termogar



LN70

Termogar simplified



LN70 SIMPLIFIED

①



LN70

Side-opening door.

②



Primary control.
Mechanism that provides oxygen for combustion through the fire grille.

③



Secondary control.
Mechanism that provides oxygen for combustion, by means of double combustion and the upper part of the glass.

④



Ash pan removal from above or below.

⑤



Steel combustion chamber (5 mm).
The high robustness of the combustion chamber ensures the long life of these devices.

⑥



External air inlet.
Guarantees that the air in the house is healthier. Does not interfere with domestic air extraction devices, such as those in the kitchen and bathroom.

⑦



Insulated wrap-around casing.

⑧



Serpentine
Stainless steel cooling coil for closed water circuit with expansion vessel.

⑨



Extending, levelling feet.

⑩



Levelling feet.

Optional items



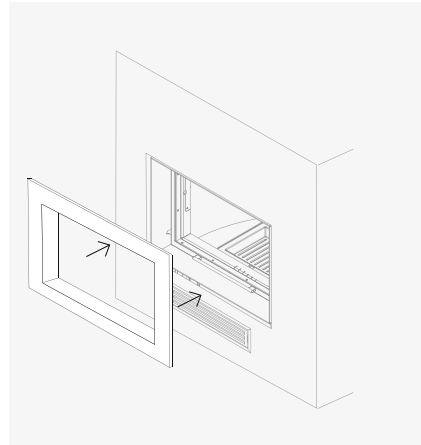
C5000
Thermal discharge valve for the closed circuit.



C5100
Two pump control, water temperature visualization, 3 valve way, auxiliary output, flow switch.

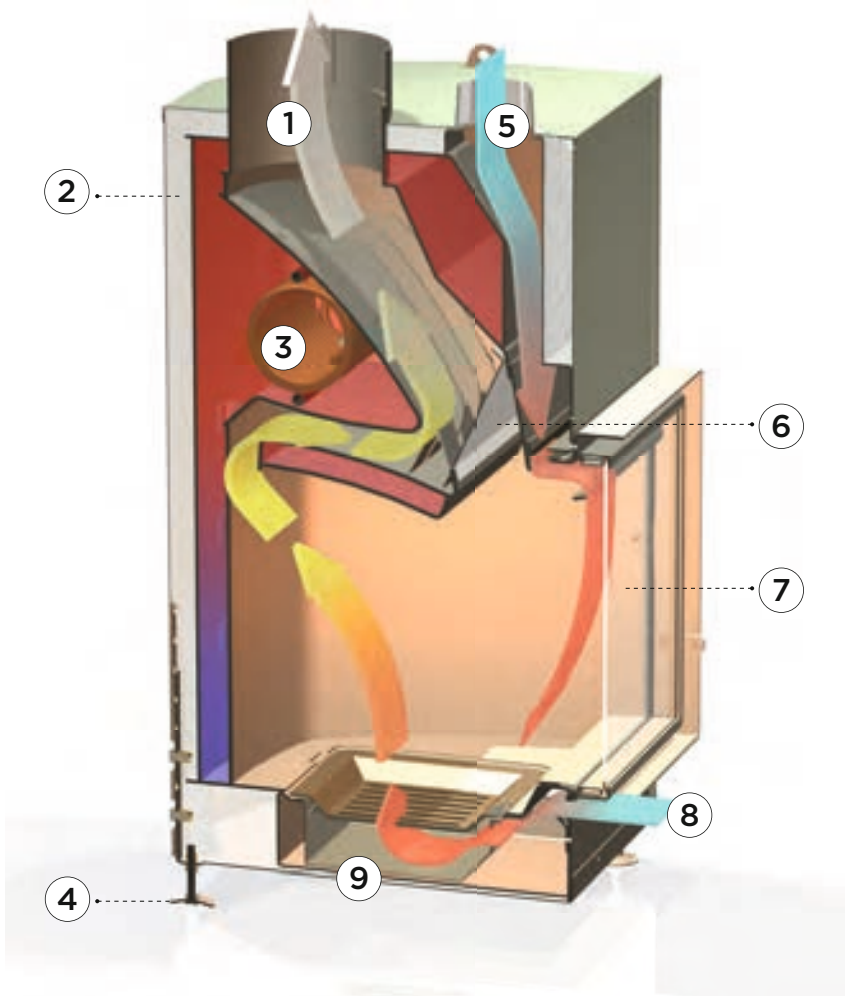
FRAME:

Option to finish the final appearance by adding a frame.



4-cm frame.

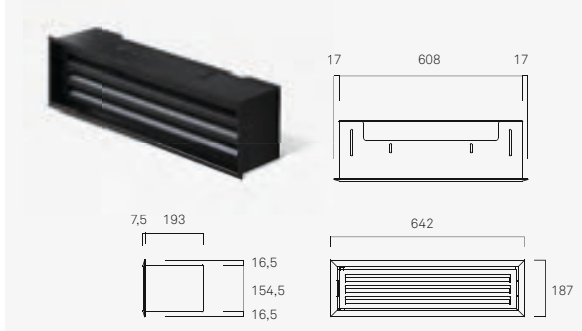
How it works



- ① Combustion gas circuit (with loading door closed)
- ② Wrap-around casing and ceramic insulation
- ③ Serpentine: System internal cooling circuit (W1501)
- ④ TERMOGAR: Extending, levelling feet. TERMOGAR SIMPLIFIED: Levelling feet.
- ⑤ Air inlet circuit (preferably exterior) for combustion
- ⑥ Smoke outlet control. Automatic
- ⑦ Glazed loading door (glass-ceramic 800°C)
- ⑧ Primary air inlet for ignition and combustion
- ⑨ Hinged fire grate and ash pan

Fitting accessories

C4000 Diffuser vent with hinged inlet



LOG STORE

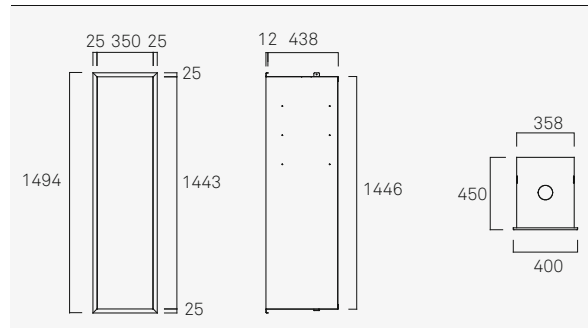
An ideal space for storing logs.

Cut-outs for three shelves and light in upper section.



Wood store

C1000 Wood store





/ 4

Design freestanding stoves

Our Freestanding stoves are distinguished by their balanced design and excellent hand-crafted finishes that do not eschew technology, which enables us to achieve excellent performance in terms of efficiency, output and minimum particle emission.

We use the most appropriate material for each part of the stove (steel, stainless steel, vermiculite, fire brick...), along with heat resistant paint for the outer finish.

We make versions to suit any space in your home.

Born

Born is a triangle-shaped, central freestanding stove. Its three sides, each offering a great view of the fire, make it incredibly transparent with modern, up-to-date, simple lines.









FEATURES

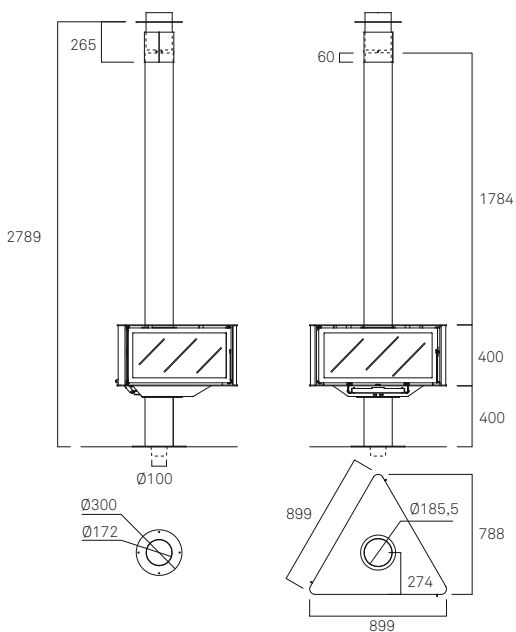
- Double ventilated hood for hot air.
- Ceiling plate.
- Heat resistant, anti-smoke, anti-odour paint.
- HRC glass (self-cleaning).
- Ember grate and ash pan.
- Optional external air inlet.
- Direct smoke pipe
- Preheated primary and secondary air.

Page 100

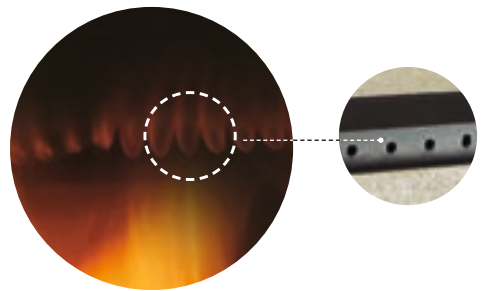
 UNE EN-13240

Born X1315

	79%
	18,5 kW
	12,5 - 22 kW
	0,13%
	79 mg/Nm ³
	4,2 kg/h
	156 kg
	30 cm







Tertiary or safety air.

Helps to increase performance: represents an extra contribution of oxygen that helps to better burn combustion gases.

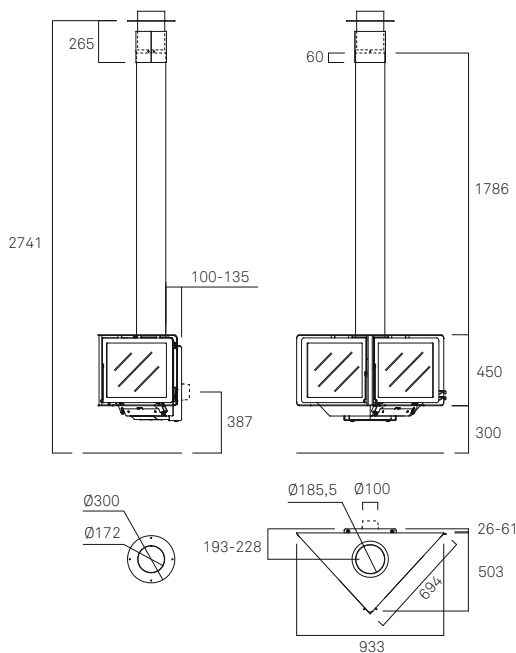
Vertex


Architectural, refined and compact, it fits in anywhere. Its double front offers a clear view of the fire. Vertex is modern and current.

FEATURES









- Double ventilated hood for hot air.
- Ceiling plate.
- Heat resistant, anti-smoke, anti-odour paint.
- Ember grate and ash pan.
- Preheated primary and secondary air.
- Tertiary or safety air.
- Optional external air inlet.
- HRC glass (self cleaning).
- Direct smoke pipe
- Vermiculite lining in black.
- Option EControl automatic combustion control.

Page 100



 UNE EN-13240

Vertex X1310*

	>75%
	10 kW
	7 - 12 kW
	<0,15%
	- mg/Nm ³
	2,5 kg/h
	128 kg
	30 cm

* Results in certification process.
Consult your dealer for more information



A4555
Optional round stand.



Combustion chamber.



City

A freestanding stove for urban homes that is ready to stand out in a modern context. Discover its straight lines and how it leaves the fire completely visible. Offers extra firewood capacity with no loss of combustion quality.

FEATURES

- Double ventilated hood for hot air.
- Ceiling plate.
- Heat resistant, anti-smoke, anti-odour paint.
- Ember grate and ash pan.
- Preheated primary and secondary air.
- Tertiary or safety air.
- Optional external air inlet.
- Direct smoke pipe
- Vermiculite lining in black.
- Option EControl automatic combustion control.

Page 100



UNE EN-13240

City X1300*



>75%



13 kW



9 - 15,5 kW



<0,13%



- mg/Nm³



3,7 kg/h

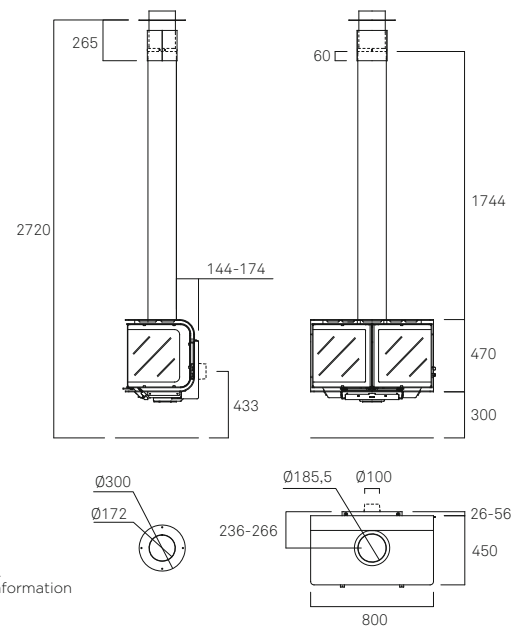


146 kg



40 cm

* Results in certification process.
Consult your dealer for more information



A4535

Optional round stand.





Combustion chamber
(back): external air inlet and
combustion air preheating.



A4560

Optional round stand.



Drop

Drop is sheer emotion. Its vertical line and rounded forms seek to adapt to and, at the same time, become the focal point of your home; with no aim to provoke indifference or to blend in.

FEATURES

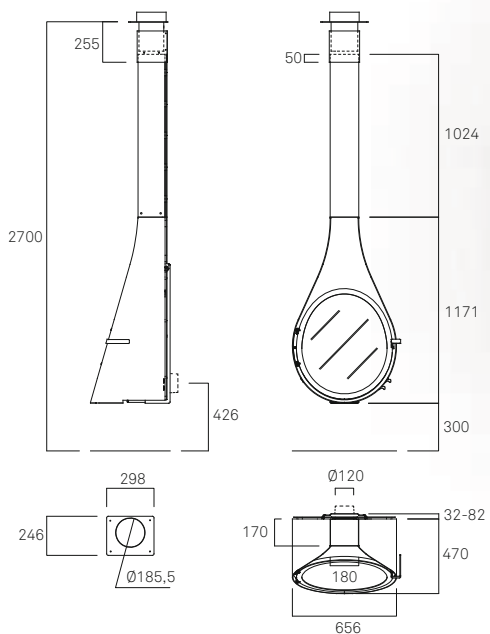
- Double ventilated hood for hot air.
- Ceiling plate.
- Heat resistant, anti-smoke, anti-odour paint.
- Preheated primary and secondary air.
- Tertiary or safety air.
- Optional external air inlet.
- Ember grate and ash pan.
- Direct smoke pipe
- Vermiculite lining in black.
- Option EControl automatic combustion control.

Page 100



Drop X1320

η	82%
n_{nom}	9 kW
n_{max}	6 - 11 kW
CO	0,10%
mg/Nm^3	31
kg/h	2,7
kg	148
cm	30




D-10 graffiti

This model offers a fire vision from the front and the sides. Screen-printed glass. This stove can be suspended or in a foot and will withstand in any atmosphere.









FEATURES

Heat resistant, anti-smoke, anti-odour paint.
Preheated primary and secondary air.
Tertiary or safety air.
Optional external air inlet.
Cover pipe.
Ceiling plate.
Vermiculite lining in black.
Lateral doors opening for reload and frontal door opening for cleaning.
Steel-coated vermiculite base.
Option EControl automatic combustion control.

Page 100

 UNE EN-13240

D-10
X1265*

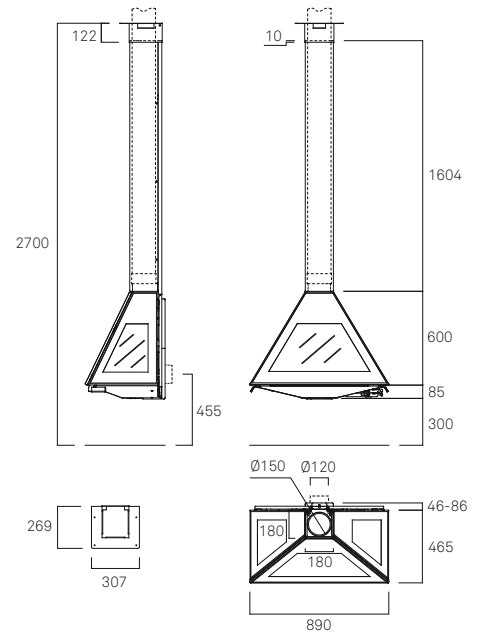
	>75%
	15,5 kW
	10 - 18,5 kW
	<0,13%
	- mg/Nm ³
	4,3 kg/h
	144 kg
	30 cm

* Results in certification process.
Consult your dealer for more information





A4551
Optional round stand.









D-7

Its size and looks make the D-7 one of our most popular modern freestanding stoves: it fits in in any contemporary-style home and is outstandingly versatile. A great little freestanding stove.

FEATURES

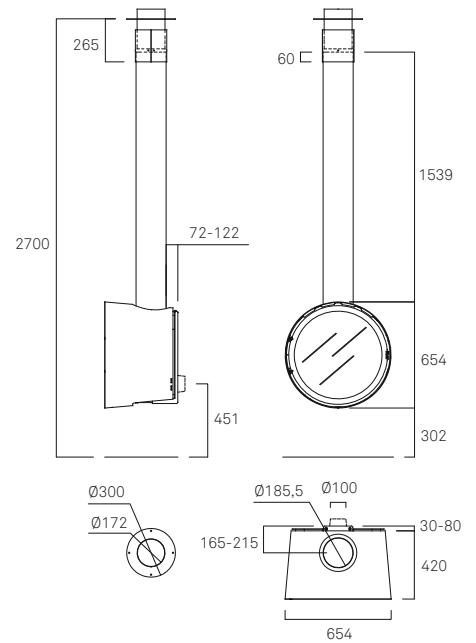
- Double ventilated hood for hot air.
- Ceiling plate.
- Heat resistant, anti-smoke, anti-odour paint.
- Ember grate and ash pan.
- Preheated primary and secondary air.
- Tertiary or safety air.
- Optional external air inlet.
- Direct smoke pipe
- Vermiculite lining in black.
- Option EControl automatic combustion control.

Page 100



D-7 X1280

η	83%
nom	7,7 kW
	5 - 9 kW
CO	0,12%
	27 mg/Nm ³
kg/h	2,5 kg/h
kg	101 kg
cm	30 cm



A4520
Optional round stand.

D-8

Its unusual shape makes it ideal to add an original touch to the modern living room. Flattened, with rounded sides, it holds more firewood.

FEATURES

- Drop-down door.
- Double ventilated hood for hot air.
- Ceiling plate.
- Heat resistant, anti-smoke, anti-odour paint.
- Ember grate and ash pan.
- Optional external air inlet.
- Direct smoke pipe
- Primary and secondary register.
- Vermiculite lining in black.
- Option EControl automatic combustion control.

Page 100



UNE EN-13240

D-8 X1285



83%



13 kW



9 - 15,5 kW



0,14%



- mg/Nm³



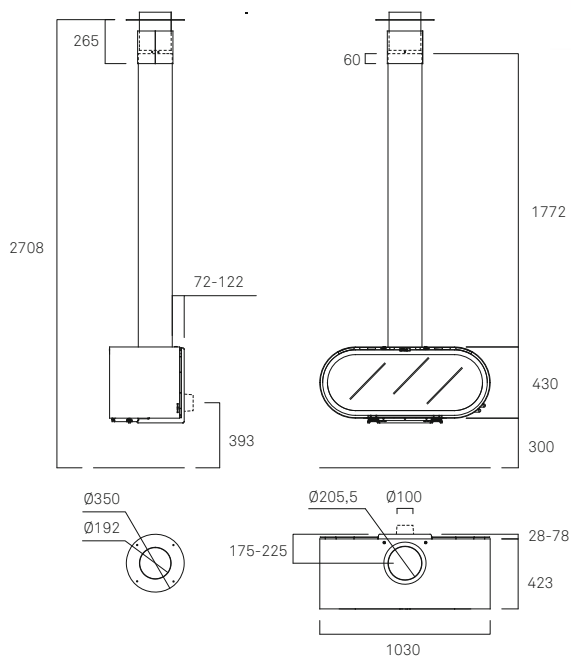
3,6 kg/h



180 kg



45 cm



A4530

Optional round stand.



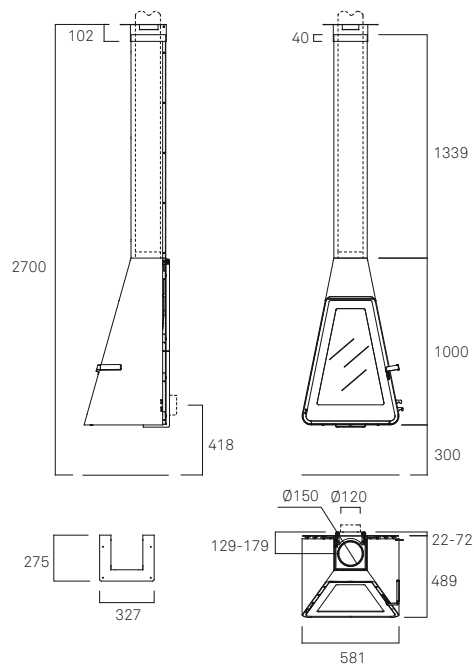
D-9

For design lovers, the D-9 has an original, elegant shape that suits stylish apartments and rooms.

FEATURES









- Double ventilated hood for hot air.
- Ceiling plate.
- Heat resistant, anti-smoke, anti-odour paint.
- Preheated primary and secondary air.
- Tertiary or safety air.
- Optional external air inlet.
- Cover pipe.
- Vermiculite lining in black.
- Steel-coated vermiculite base.
- Option EControl automatic combustion control.

Page 100



 UNE EN-13240

D-9
X1292

	84 %
	9,4 kW
	7 - 12 kW
	0,08 %
	27 mg/Nm ³
	2,4 kg/h
	162 kg
	30 cm



A4541
Optional round stand.





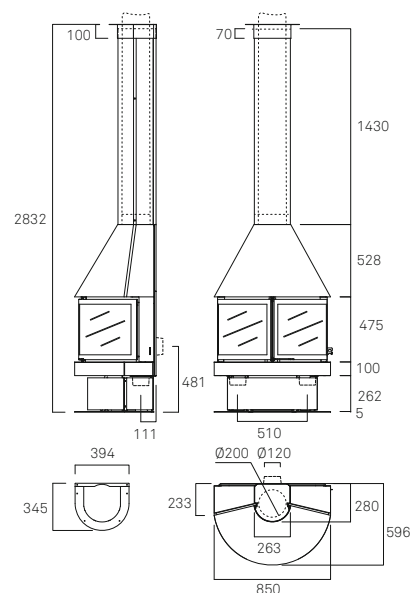
Aitana

An elegant frontal rounded freestanding stove that suits any room. Its classic style fits specially traditional spaces. Two doors opening from the center.

FEATURES

- Double ventilated hood for hot air.
- Ceiling plate.
- Heat resistant, anti-smoke, anti-odour paint.
- Preheated primary and secondary air.
- Tertiary or safety air.
- Optional external air inlet.
- Ember grate and ash pan removal from the bottom.
- Cover pipe.
- Vermiculite lining in black.
- Option EControl automatic combustion control.

Page 100



UNE EN-13240

Aitana X1150



78%



16 kW



11 - 19 kW



0,09%



29 mg/Nm³



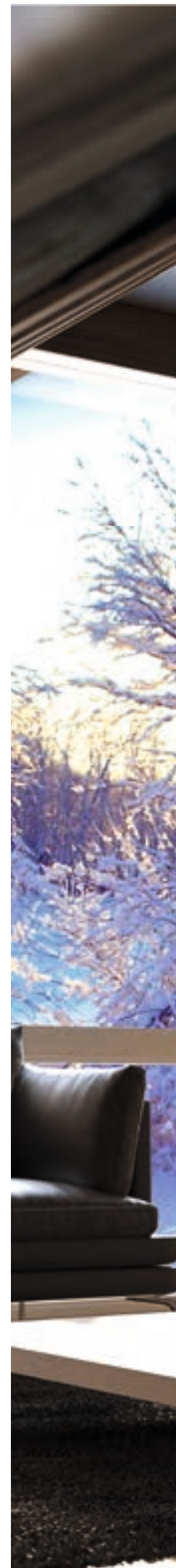
4,6 kg/h



291 kg



35 cm









Barbara-90

Barbara-90

This model preserves the charm of traditional fireplaces. Central door opening and lateral doors opening as well.

FEATURES

- Double ventilated hood for hot air.
- Ceiling plate.
- Heat resistant, anti-smoke, anti-odour paint.
- Preheated primary and secondary air.
- Tertiary or safety air.
- Optional external air inlet.
- Ember grate and ash pan removal from the bottom.
- Cover pipe.
- Vermiculite lining in black.
- Option EControl automatic combustion control.

Page 100



UNE EN-13240

Barbara-90 X1118



80%



15,5 kW



10,5 - 18,5 kW



0,10%



26 mg/Nm³



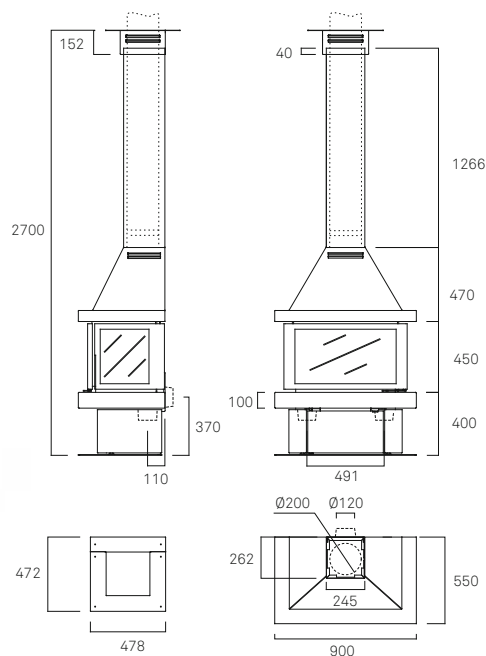
4,1 kg/h



232 kg



40 cm



Barbara-120

Barbara 120 is Barbara 90 older sister. Its main feature is its size - this one is made for large rooms.









FEATURES

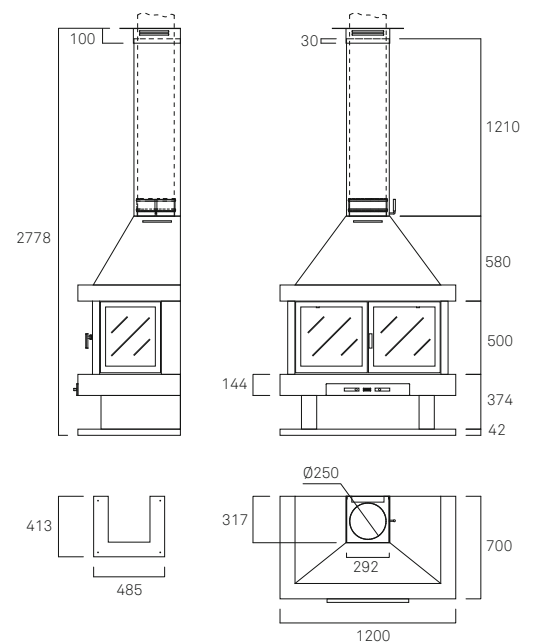
Double ventilated hood for hot air.
Ceiling plate.
Heat resistant, anti-smoke, anti-odour paint.
Ember grate and ash pan.
Cover pipe.
Primary and secondary register.
Refractory lining.

Page 100

 UNE EN-13240

Barbara-120 X1121

	70%
	18 kW
	12,5 - 21,5 kW
	0,15%
	- mg/Nm ³
	5,3 kg/h
	316 kg
	60 cm





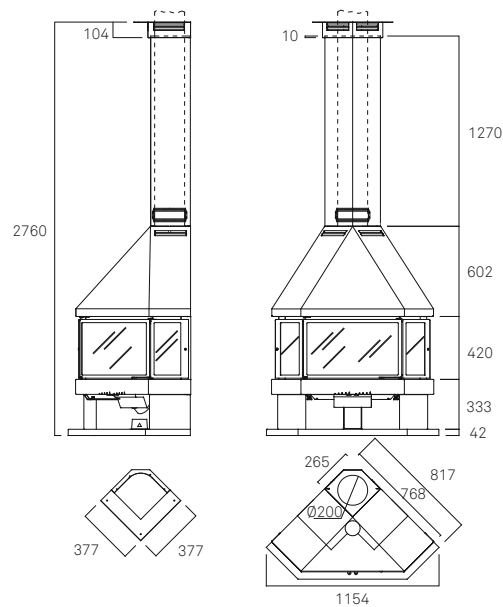
Estela

Our straight-sided corner unit, the Estela, is fire brick-lined and has primary and secondary registers.

FEATURES

- Double ventilated hood for hot air.
- Ceiling plate.
- Heat resistant, anti-smoke, anti-odour paint.
- Ember grate and ash pan upper removal.
- Optional external air inlet.
- Preheated primary and secondary air.
- Cover pipe (needs internal smoke pipe)
- Refractory lining.
- Option EControl automatic combustion control.

Page 100



UNE EN-13240

Estela X1043

	82%
	15,5 kW
	10,5 - 18 kW
	0,12%
	- mg/Nm ³
	5 kg/h
	217 kg
	40 cm




Giselle

A central freestanding stove for those who love a real fire and good conversation, Giselle is a great reason to gather around the fire.









FEATURES

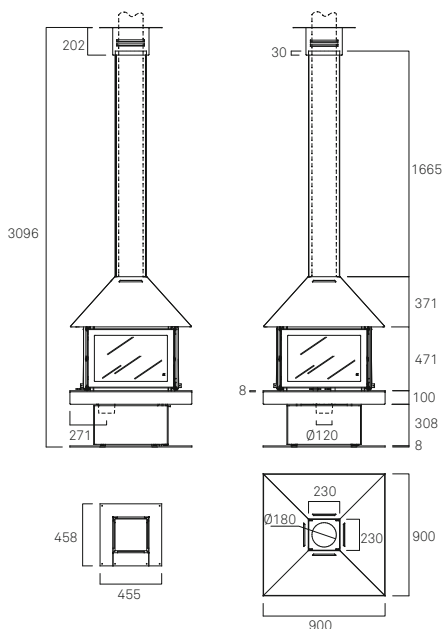
- Double ventilated hood for hot air.
- Ceiling plate.
- Heat resistant, anti-smoke, anti-odour paint.
- Ember grate and ash pan removal from the bottom.
- Optional external air inlet.
- Cover pipe.
- Preheated primary and secondary air.
- Four doors with automatic closure on loading door.

Page 100

 UNE EN-13240

Giselle-90 X1273

	84%
	17,6 kW
	12 - 21 kW
	0,09%
	25 mg/Nm ³
	4,5 kg/h
	325 kg
	40 cm





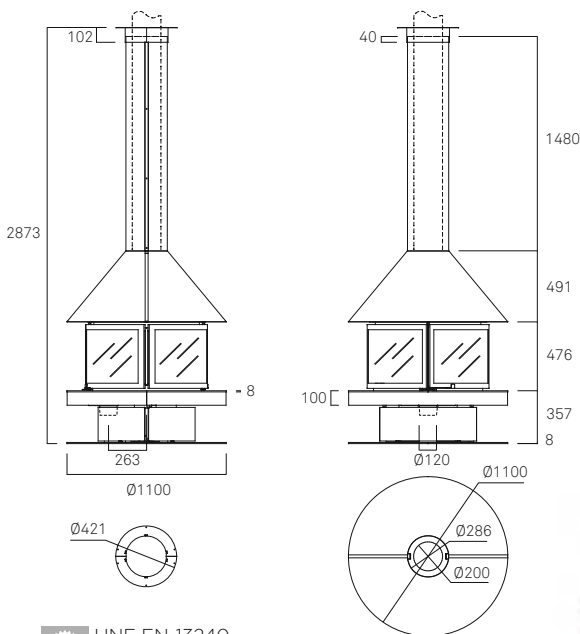
Gala

This impressive central freestanding stove is synonymous with elegance and distinction. The focal point of any living room, it also achieves great energy efficiency. Gala is exclusive.

FEATURES

- Double ventilated hood for hot air.
- Ceiling plate.
- Heat resistant, anti-smoke, anti-odour paint.
- Ember grate and ash pan removal from the bottom.
- Optional external air inlet.
- Cover pipe (needs internal smoke pipe).
- Preheated primary and secondary air.

Page 100



UNE EN-13240

Gala X1222

η	81%
nom	17,5 kW
	12 - 21kW
CO	0,16%
	- mg/Nm ³
kg/h	4,7 kg/h
kg	297 kg
cm	40 cm

Standard color black

White optional



X1222-210 / X1222-215

Option to request in black glass finishing on the upper base and the lower platform base.

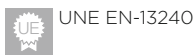
| Prune

Impressive and efficient as Gala, this central freestanding stove opts for a daring hood which does not go unnoticed.

FEATURES

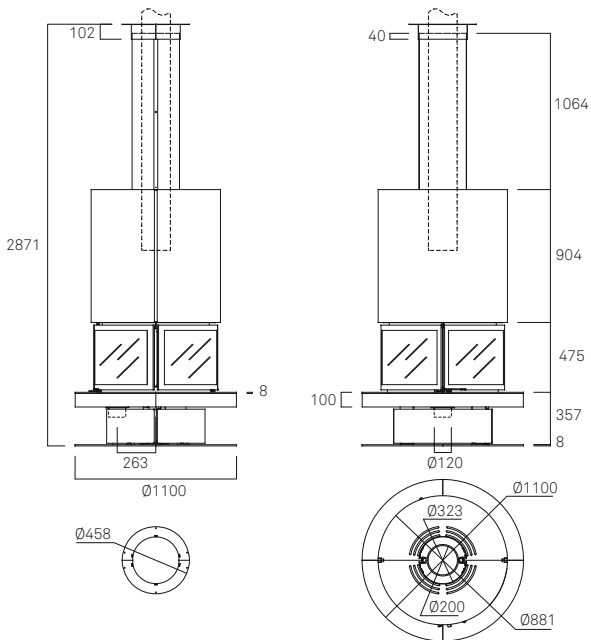
- Double ventilated hood for hot air.
- Ceiling plate.
- Heat resistant, anti-smoke, anti-odour paint.
- Ember grate and ash pan removal from the bottom.
- Optional external air inlet.
- Cover pipe.

Page 100



Prune X1225

- 81%
- 17,5 kW
- 12 - 21 kW
- 0,16%
- mg/Nm³
- 4,7 kg/h
- 297 kg
- 40 cm



Prune + X1222-210 + X1222-215

Picture of Prune with black glass option

X1222-210 / X1222-215

Option to request in black glass finishing on the upper base and the lower platform base.



Standard color black



White optional





General features



Ceiling plate.



Glass-ceramic glass.



External air inlet.

Guarantees that the air in the house is healthier. Does not interfere with domestic air extraction devices, such as those in the kitchen and bathroom.



Combustion chamber (back): external air inlet and combustion air preheating.



Tertiary or safety air.

Makes an extra contribution of oxygen that enables the combustion gases to burn better.



Primary and secondary register.

Provides oxygen for the lower and upper part of the glass.



Ember grate and ash pan.

Born
Vertex
City
Drop

D-7
D-8
Barbara-120



Ember grate and ash pan removal from below.

Barbara-90
Aitana
Gisele 90
Gala

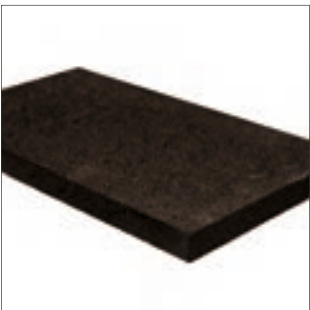
Prune
Estela (upper
removal)



Cover pipe.



Direct smoke pipe

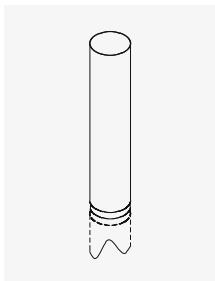


Vermiculite lining in black.

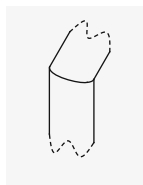


Refractory lining.

Custom adaptations



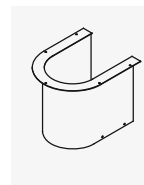
Additional finished flue



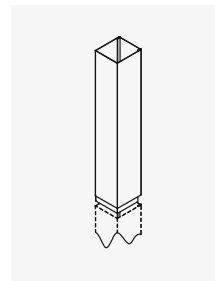
Finished flue corner piece



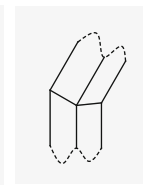
Sloped trim



Special trim



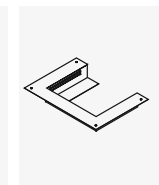
Additional cover pipe



Cover pipe corner piece



Sloped trim

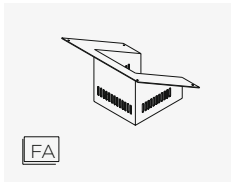


Special trim

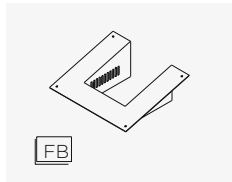
For other modifications please ask to our technics.

Angle options

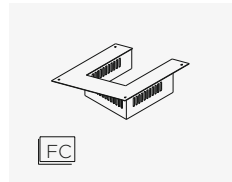
Options for frontal model



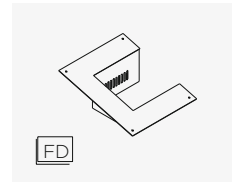
FA



FB



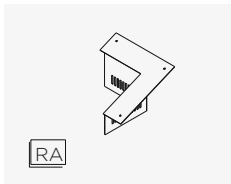
FC



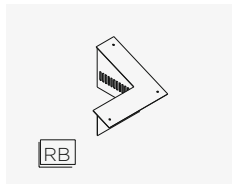
FD

* Trim may slope in two directions and not match any of the examples. Please enquire about special cases.

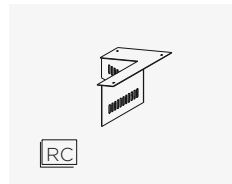
Options for corner model



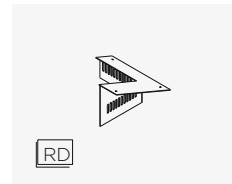
RA



RB



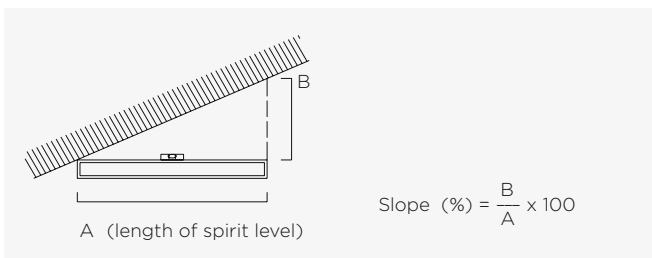
RC



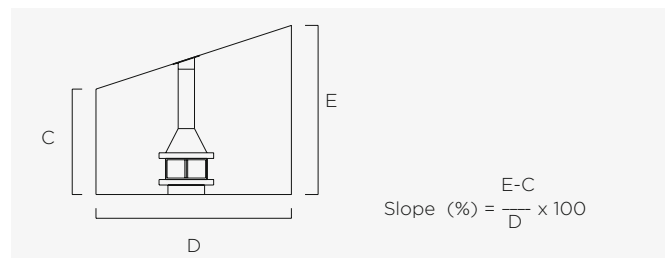
RD

Measuring the pitch angle

Using spirit level

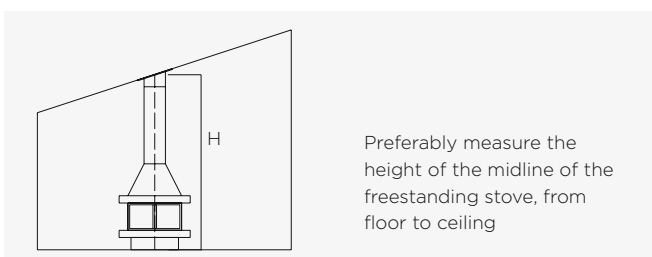


Using a tape measure



Measuring the height

Frontal fireplace



Corner fireplace





/ 5

Freestanding stoves

With the new Habit range you can personalise your stove as much as you want. From our basic designs, you can choose between different sizes, formats, fire windows and fans systems for maximum efficiency.

Also available with lower wood store, metal bench unit and wall-mounting version.

Also in this section, take a look at our Hebar model, a stove-oven-barbecue unit that's a heater and a cooker all in one.



Habit 70 A
With wood store





Habit 50 V
With wood store

Habit frontal



FEATURES

- Reversible front door.
- Steel combustion chamber.
- Vermiculite inner lining.
- Wraparound casing in 6 mm steel.
- Optional external air inlet.
- Preheated primary and secondary air.
- Tertiary or security air.
- Ash pan removal from the front.
- Double deflector, top deflector with two-position adjustable flow.
- Option EControl automatic combustion control.
- Two or four fans unit with two automatic speed settings and one manual.

Can be supplied without fans unit on request.

Page 44



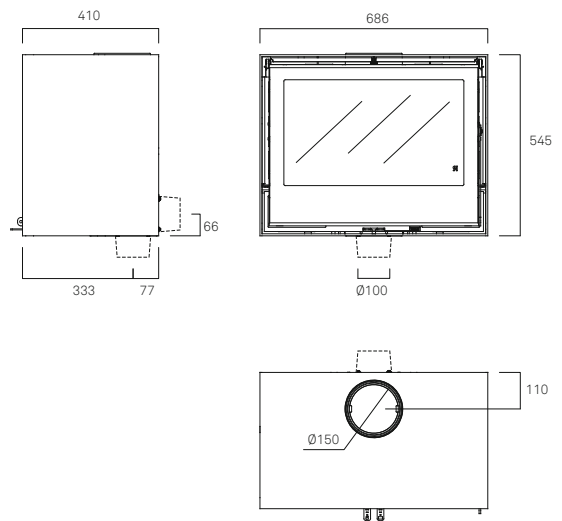
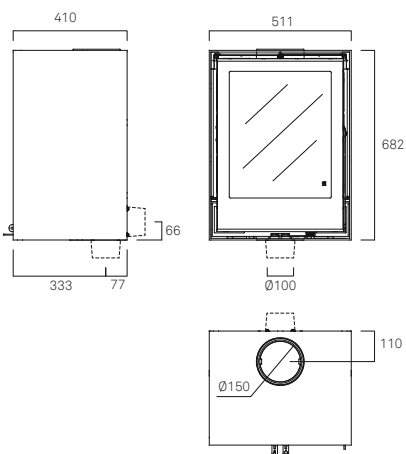
UNE EN-13240
UNE EN-60335

	Habit 50V E2100	Habit 70A E2110	Habit 80 E2120	Habit 100 E2130
	77%	76%	78%	80%
 nom	6 kW	8 kW	9,5 kW	11 kW
	4 - 7 kW	5,5 - 9,5 kW	6,5 - 11,5kW	7,5 - 13 kW
	0,06%	0,08%	0,09%	0,09%
	23 mg/Nm ³	36 mg/Nm ³	34 mg/Nm ³	31 mg/Nm ³
	2 kg/h	2,4 kg/h	2,8 kg/h	3,2 kg/h
	139 kg	145 kg	154 kg	202 kg
	30 cm	45 cm	50 cm	60 cm

Habit 50 V



Habit 70 A



E2100-2 Wood store Habit 50 V (511x400x410 mm)

E2110-2 Wood store Habit 70 A (686x400x410 mm)



E2190 Bench unit 1000 mm (1000x400x450 mm)

E2192 Bench unit 1200 mm (1200x400x450 mm)

E2194 Bench unit 1400 mm (1400x400x450 mm)

E2196 Bench unit 1600 mm (1600x400x450 mm)



E2100-1 Wall mounting kit Habit 50 V

E2110-1 Wall mounting kit Habit 70 A

It only allows the external air inlet through the connector on the back.

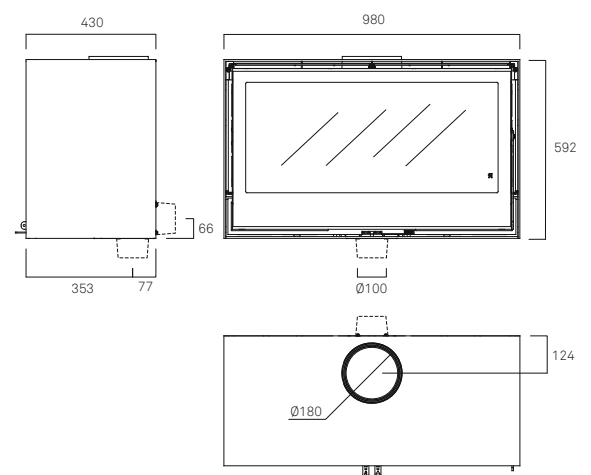
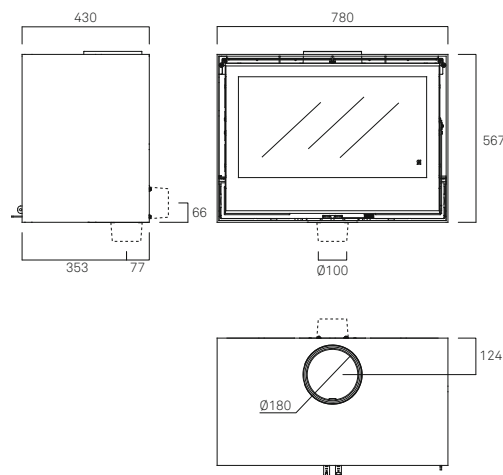
It only allows the external air inlet through the connector on the back.



Habit 80
With wood store

Habit 80

Habit 100



E2120-2 Wood store Habit 80
(780x400x430 mm)

E2130-2 Wood store Habit 100
(980x400x430 mm)

It only allows the external air inlet through the connector on the back.

E2190 Bench unit 1000 mm (1000x400x450 mm)

E2192 Bench unit 1200 mm (1200x400x450 mm)

E2194 Bench unit 1400 mm (1400x400x450 mm)

E2196 Bench unit 1600 mm (1600x400x450 mm)

It only allows the external air inlet through the connector on the back.

E2120-1 Wall mounting kit Habit 80

E2130-1 Wall mounting kit Habit 100



Habit three-sided

FEATURES

Steel combustion chamber.
 Vermiculite inner lining.
 Wraparound casing in 6 mm steel.
 Optional external air inlet.
 Preheated primary and secondary air.
 Tertiary or safety air.
 Ash pan removal from front.
 Double deflector, top deflector with two-position adjustable flow.
 Option EControl automatic combustion control.
 Two or four fans unit with two automatic speed settings and one manual.

Can be supplied without fans unit on request.

Page 44

 UNE EN-13229
 UNE EN-60335

Habit 73 TC **Habit 93 TC**
E2140* **E2145***

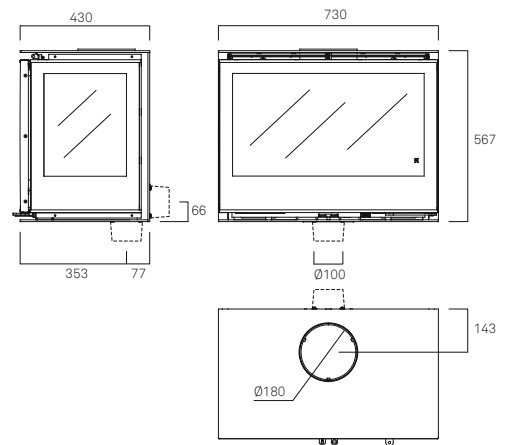
	>75%	>75%
	9 kW	14,5 kW
	6 - 11 kW	10 - 17,5 kW
	<0,13%	<0,13%
	- mg/Nm ³	- mg/Nm ³
	2,6 kg/h	4 kg/h
	159 kg	178 kg
	40 cm	50 cm

* Results in certification process.
 Consult your dealer for more information

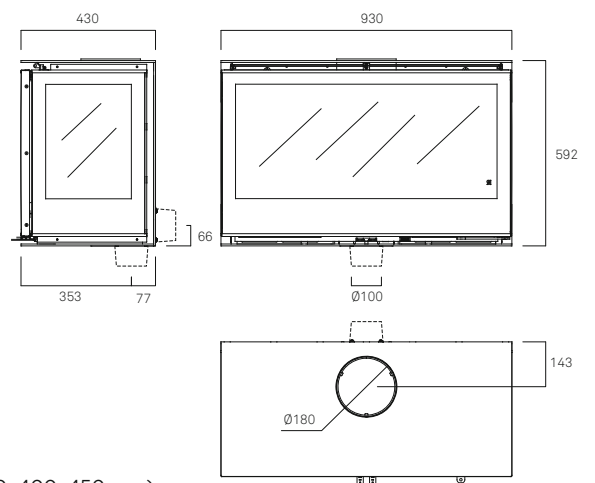


Habit 93 TC
With wall mounting kit

Habit 73 TC



Habit 93 TC



E2140-2 Wood store Habit 73 TC
(730x400x430 mm)



E2120-1 Wall mounting kit
Habit 73 TC

E2145-2 Wood store Habit 93 TC
(930x400x430 mm)

E2130-1 Wall mounting kit
Habit 93 TC

It only allows the external air inlet through the connector on the back.



E2190 Bench unit 1000 mm (1000x400x450 mm) / **E2192** Bench unit 1200 mm (1200x400x450 mm)
E2194 Bench unit 1400 mm (1400x400x450 mm) / **E2196** Bench unit 1600 mm (1600x400x450 mm)

It only allows the external air inlet through the connector on the back.



Habit 76 LI
With bench

Habit LD/LI



FEATURES

Steel combustion chamber.
Vermiculite inner lining.
Wraparound casing in 6 mm steel.
Optional external air inlet.
Preheated primary and secondary air.
Tertiary or safety air.
Ash pan removal from front.
Double deflector, top deflector with two-position adjustable flow.
Option EControl automatic combustion control.
Two fans unit with two automatic speed settings and one manual.

Can be supplied without fans unit on request.

Page 44



UNE EN-13229
UNE EN-60335

	Habit 76 LD	Habit 76 LI
	E2150*	E2155*



>75%



12 kW



8,5 - 14,5 kW



<0,13%



- mg/Nm³



3,1 kg/h

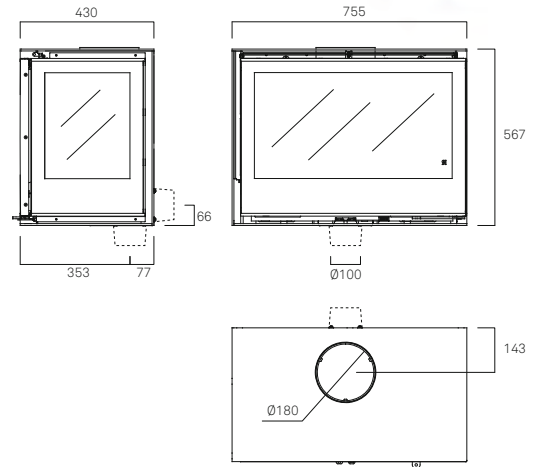


161 kg

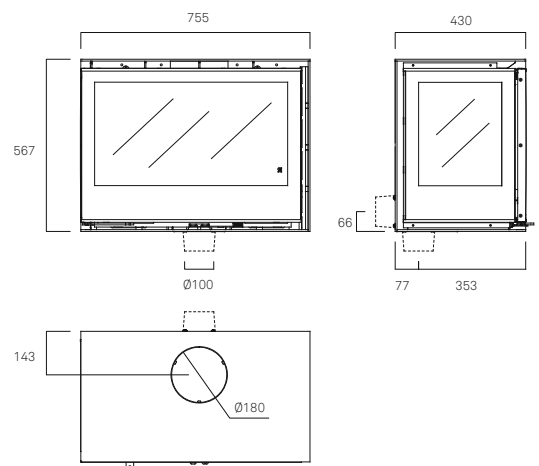


40 cm

* Results in certification process.
Consult your dealer for more information



Habit 76 LI



E2150-2 Wood store 76 LD/LI (755x400x430 mm)

It only allows the external air inlet through the connector on the back.



E2120-1 Wall mounting kit Habit 76 LD/LI



E2190 Bench unit 1000 mm (1000x400x450 mm) / **E2192** Bench unit 1200 mm (1200x400x450 mm)
E2194 Bench unit 1400 mm (1400x400x450 mm) / **E2196** Bench unit 1600 mm (1600x400x450 mm)

It only allows the external air inlet through the connector on the back.



Habit 80 DC
With bench

Habit two-sided



FEATURES

- Reversible doors.
- Steel combustion chamber.
- Vermiculite inner lining.
- Wraparound casing in 6 mm steel.
- Please ask about the option of external air inlet.
- Preheated primary and secondary air.
- Double deflector, lower deflector with two-position adjustable flow.
- Steel-coated vermiculite base.

Page 44



UNE EN-13229

Habit 80 DC E2170*



>75%



13,5 kW



9,5 - 16kW



<0,13%



- mg/Nm³



3,6 kg/h



173 kg



45cm

Habit 100 DC E2175*

-%

- kW

- kW

-%

- mg/Nm³

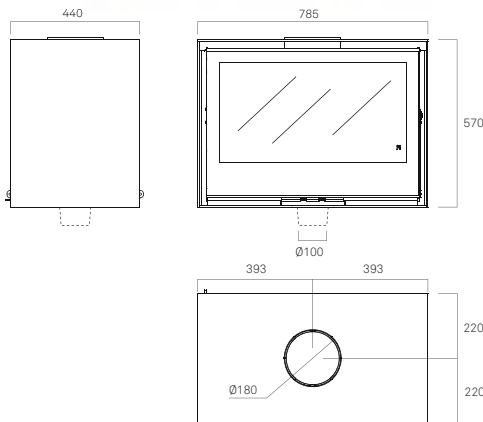
- kg/h

207 kg

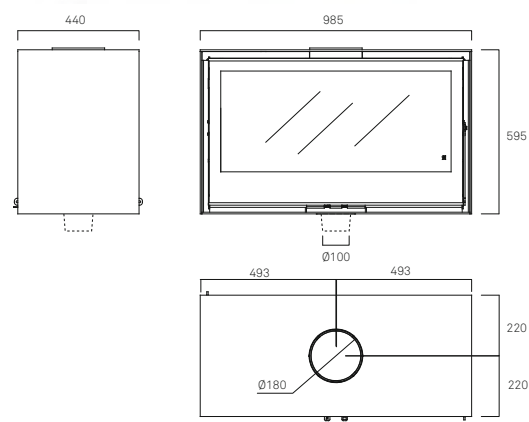
- cm

* Results in certification process.
Consult your dealer for more information

Habit 80 DC



Habit 100 DC



E2170-2 Wood store Habit 80 DC
(785x400x440 mm)
E2175-2 Wood store Habit 100 DC
(985x400x440 mm)

It does not allow external air inlet.



E2190 Bench unit 1000 mm (1000x400x450 mm)
E2192 Bench unit 1200 mm (1200x400x450 mm)
E2194 Bench unit 1400 mm (1400x400x450 mm)
E2196 Bench unit 1600 mm (1600x400x450 mm)

It does not allow external air inlet.



Hebar



“Real Mediterranean style”

STOVE-OVEN-BARBECUE

Hebar

Hebar is one of the most complete and efficient products on the market and thanks to its high efficiency, it also has the ability to heat a large area. The same inertia of the stove keeps the heat for cooking in the oven until about 3 hours after the last loading.

STOVE FEATURES:

- Optional external air inlet.
- Preheated primary and secondary air.
- Tertiary or safety air.
- Front ash removal.
- Bottom hinged door allows depositing the grid and avoid soiling.
- Supports EControl automatic combustion control.

OVEN FEATURES:


- Vitrified steel Oven.
- Steel grill and vitrified steel plate.
- Capacity: 78 litres
- Thermometer included

BARBECUE FEATURES:









- Stainless steel grill

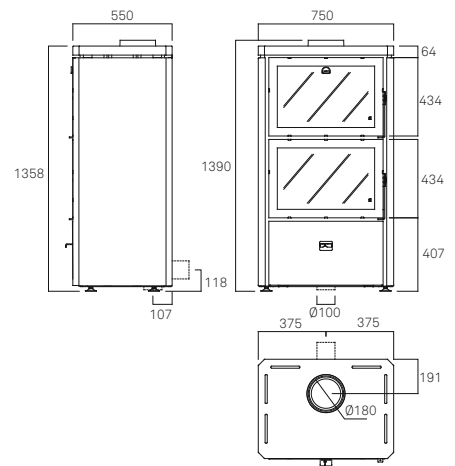
Page 100



 UNE EN-13240

Hebar E3000

-  78%
-  10,5 kW
-  7 - 12,5 kW
-  0,12%
-  40 mg/Nm³
-  3,4 kg/h
-  254 kg
-  45 cm







/ 6

Barbecues

Barbecues, the pleasure
of al fresco cooking.

Rocal barbecues come in classic styles, are
reliable and last a lifetime.

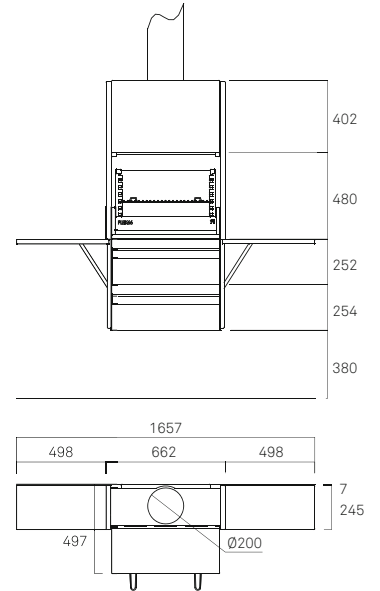
The Plek66 leaves no one indifferent.

Plek 66 inox

The Plek66 leaves no one indifferent. Designed to take up minimum space, this barbecue is ideal for those looking for a practical, quality product but who don't have much space.

Plek 66 inox
B2305

-  97 kg
-  45 cm



Grill measures (mm): 515x410



Sides open to form side tables.



Ash collection drawer.



Bottom drawer for charcoal.



When the grill compartment is closed, the hood also closes, and the ash falls into the ash collection drawer.



Standard accessories

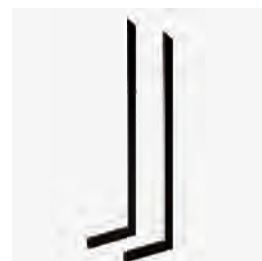


Fish grill and tong.

Optional items



Stainless steel flue 100 cm.
Stainless steel flue 150 cm.



Stainless steel stands.

Fornells inox jardín



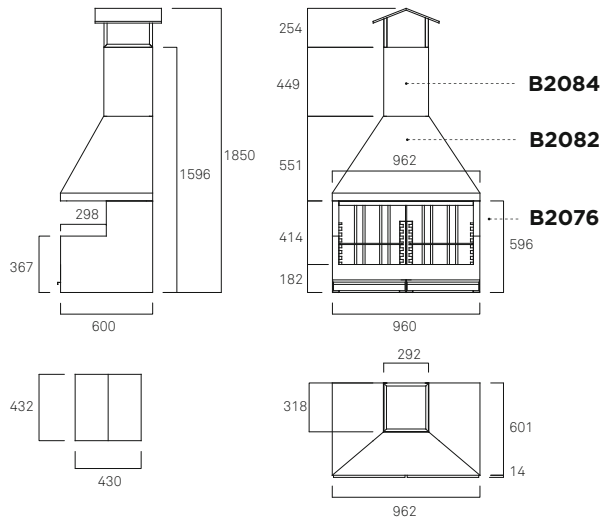
Fornells inox jardín

This barbecue allows 2 fires being used at the same time. Each fire has its own grill and ash pan. Outdoors.

CUSTOM ADAPTATIONS

Stainless steel flue.

Page 128



Grill measures (mm): 410x480



Fornells inox porche

This barbecue allows 2 fires being used at the same time. Each fire has its own grill and ash pan. Indoors.

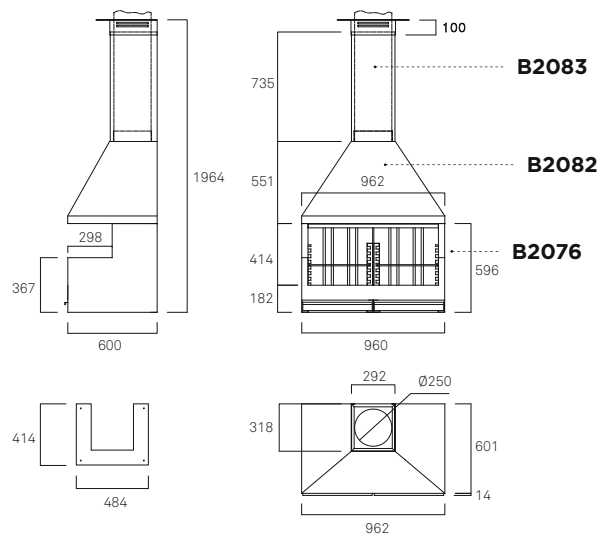
CUSTOM ADAPTATIONS

Stainless steel cover pipe.

Special trim.

Sloped trim.

Page 128



Grill measures (mm): 410x480



STANDARD ACCESSORIES

Fish grill and tong.

Paella pan.

Page 128

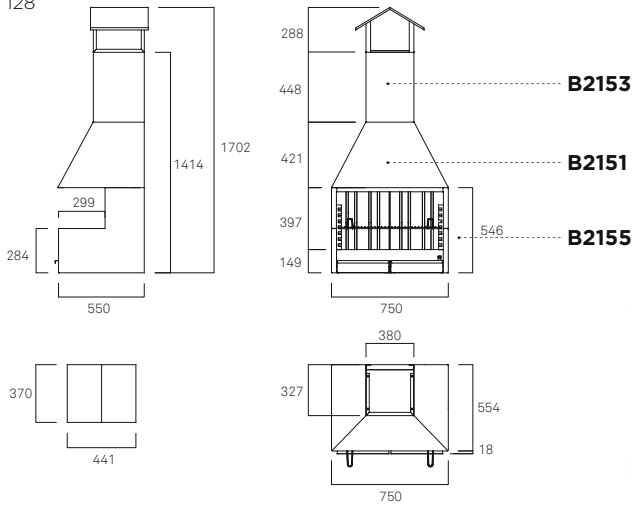
Palma 75 inox jardín

Stainless steel barbecue with grill and ash box included. Outdoors.

CUSTOM ADAPTATIONS

Stainless steel flue.

Page 128



Grill measures (mm): 655x450



Palma 75 inox porche

Stainless steel barbecue with grill and ash box included. Indoors.

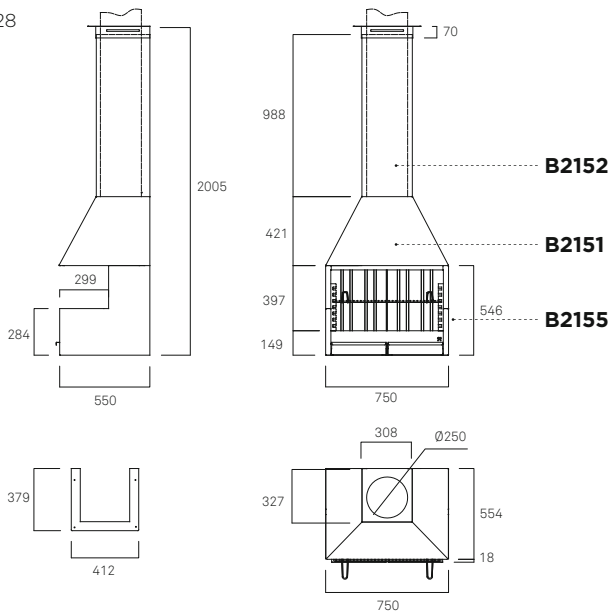
CUSTOM ADAPTATIONS

Stainless steel cover pipe.

Special trim.

Sloped trim.

Page 128



Grill measures (mm): 655x450



STANDARD ACCESSORIES

Fish grill and tong.

Paella pan.

Page 128



Palma 75 inox jardín

| Standard accessories - Fornells and Palma

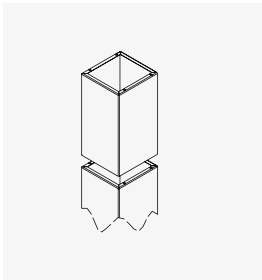


Fish grill and tong.

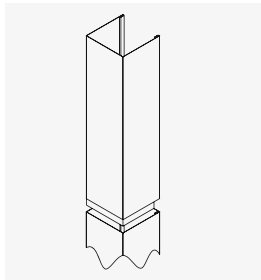


Paella pan.

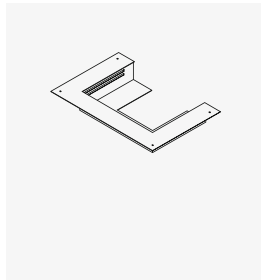
| Custom adaptations - Fornells and Palma



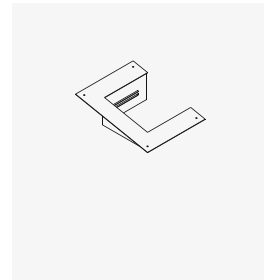
Stainless steel flue.



Stainless steel cover pipe.

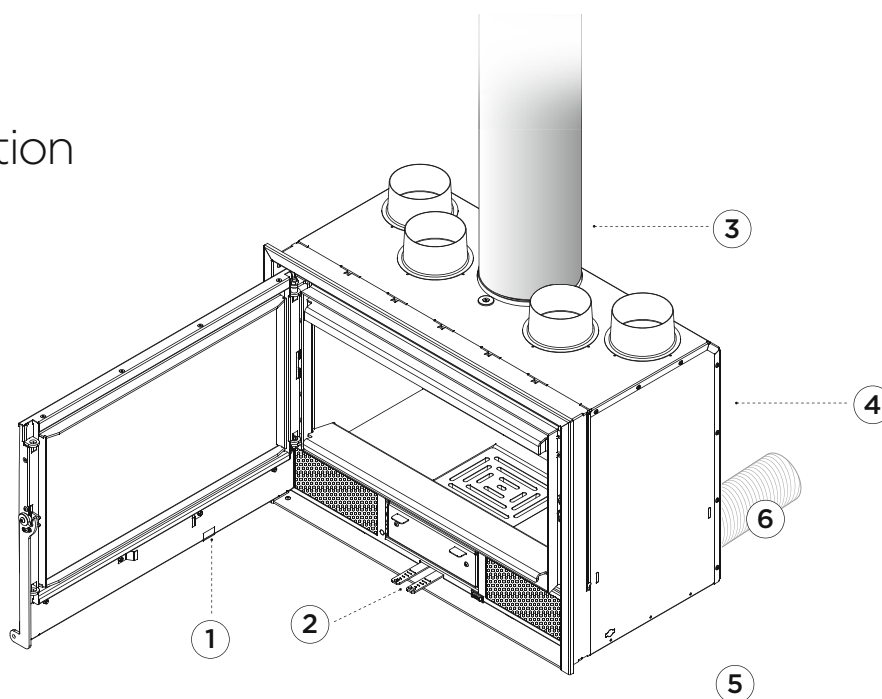


Special stainless steel trim.



Sloped stainless steel trim.

ECOControl Smart combustion



- ① Door magnet
- ② Opening sensor
- ③ Temperature sensor
- ④ Air control valve
- ⑤ Control unit



ECOControl: Intelligent combustion control system.

Compatible with all Rocal models featuring an external air inlet: inserts, G series fireboxes, fireplaces and stoves.

Kit comprising regulator, temperature sensor, door sensor and control valve.

ECOControl is a revolutionary system for intelligent combustion control. The device manages the air requirements of the fire at each stage of combustion, ensuring it burns correctly and adapting wood consumption to requirements. This achieves a fuel saving of up to 30% and extends the lifespan of the fireplace.

The system has three power settings offering fully configurable operation. ECOControl is very easy to use: the control process is started by simply pushing a button. This allows the warm elegance of the fire to be enjoyed in a completely worry-free way; for added convenience, the system will let you know when more wood is needed. For your safety, there is a power cut-out mode, which releases control of the fireplace if there is a failure in the power supply, and there is also a high-temperature alarm.

ECOCNTRL: SAVING, EFFICIENCY AND SAFETY

Other products



Ash vacuum cleaner:
Double filter system.
Power rating 1000 W.

Symbols



Efficiency



Rated power kW



Output range



CO to 13%O₂ Carbon monoxide emission



Fuel consumption per hour



Weight



Log length



UNE-EN XXXX certified.

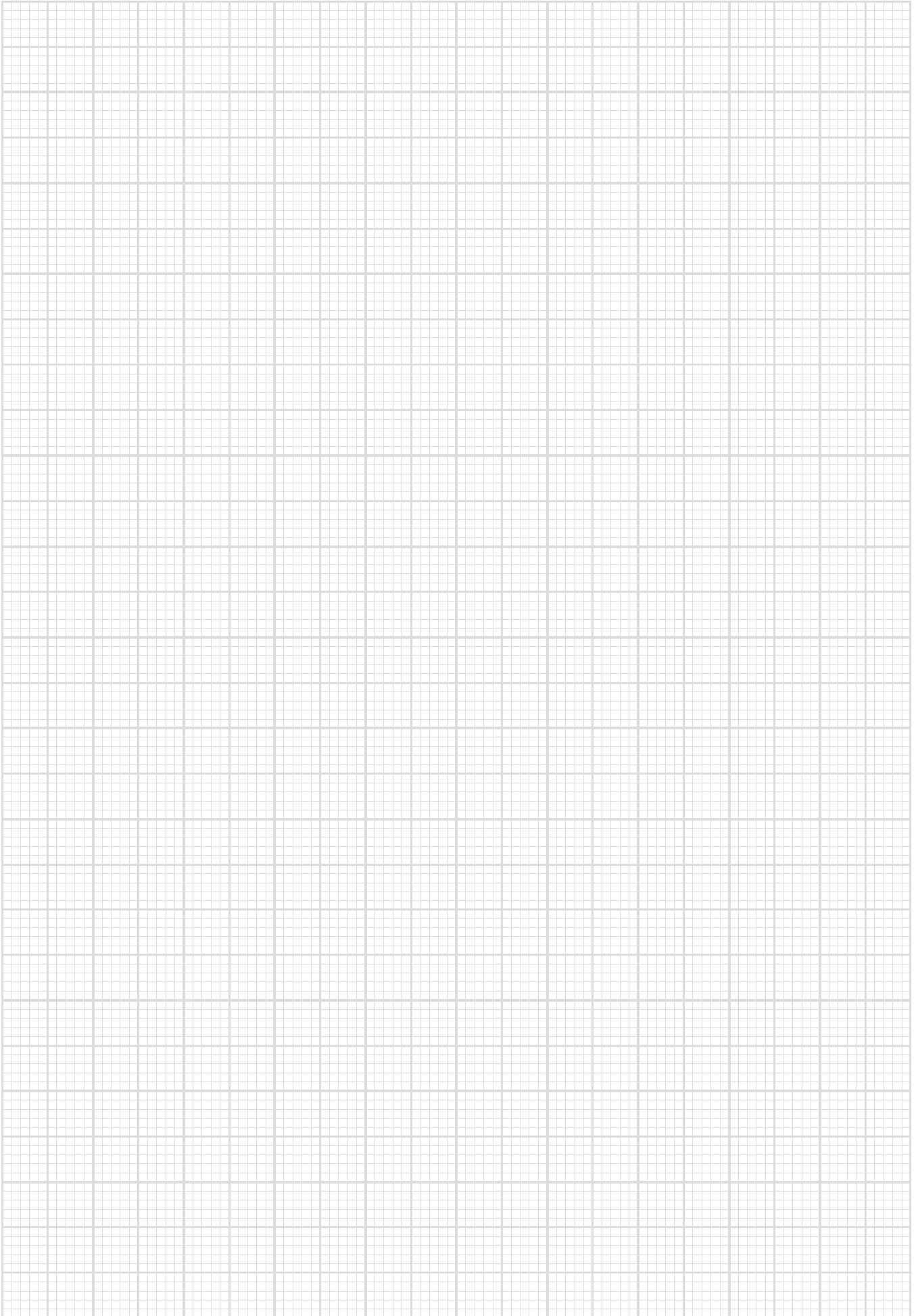


Particle concentration



New model

Notes



Manufacturas Rocal SA

Raval Sant Antoni, 2
08540 Centelles
Barcelona

www.rocal.es

man.rocal@rocal.es
T +34 93 8812451
F +34 93 8810631

Manufacturer

Manufacturas Rocal SA

Product design

Manufacturas Rocal SA and Joan Gaspar

Decorative frame design

Berta Noguer

Graphic design

Integrum

Photography

Integrum
Foto-disseny JE

Copyright

Manufacturas Rocal SA, may 2017

More information
www.rocal.es



ROCAL

MANUFACTURAS SA

Manufacturas Rocal SA

Raval Sant Antoni, 2
08540 Centelles
Barcelona

www.rocal.es

man.rocal@rocal.es
T +34 93 8812451
F +34 93 8810631